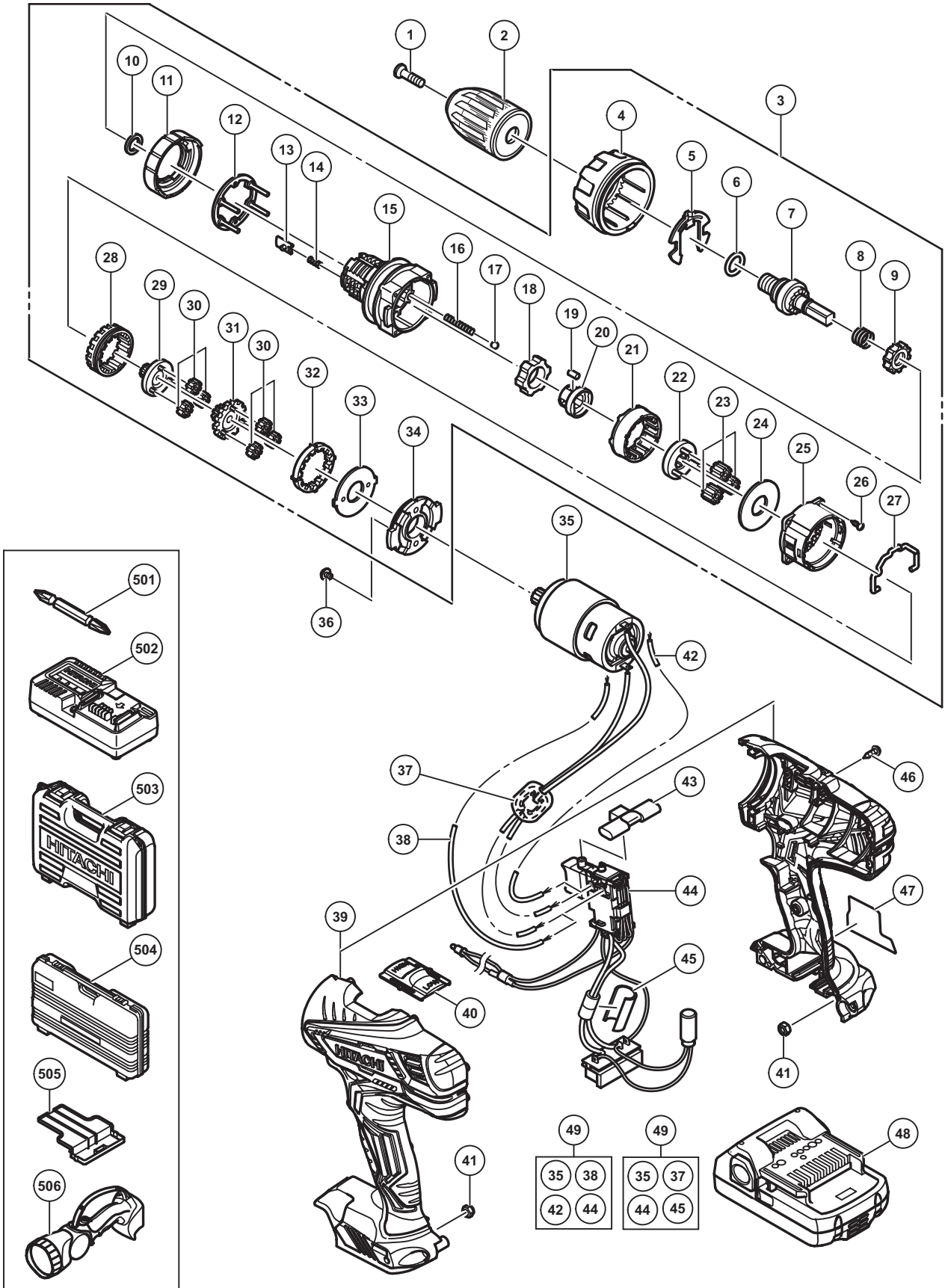


ELECTRIC TOOL PARTS LIST

■ CORDLESS IMPACT DRIVER DRILL 2014·4·21
 Model DV 18DGL (E1)



PARTS

DV 18DGL

ITEM NO.	CODE NO.	DESCRIPTION	NO. USED	REMARKS
1	311959	SPECIAL SCREW (LEFT HAND) M6 X 23	1	
* 2	336885	DRILL CHUCK 13VLRV-N (W/O CHUCK WRENCH)	1	
* 2	336973	DRILL CHUCK 13VLRV-N (W/O CHUCK WRENCH)	1	FOR USA,CAN
3	336875	GEAR BOX ASS'Y	1	INCLUD.4-34
4	336878	CLUTCH DIAL	1	
5	327146	CLICK SPRING	1	
6	327142	O-RING	1	
7	336351	SPINDLE	1	
8	327136	SPRING (C)	1	
9	327134	RATCHET (B)	1	
10	327147	WASHER (A)	1	
11	327145	NUT	1	
12	336877	WASHER	1	
13	327135	SLIP BLOCK	2	
14	327133	STOPPER SPRING	2	
15	336876	FRONT CASE	1	
16	327143	SPRING (A)	4	
17	306936	STEEL BALL D5	4	
18	336879	LOCK RING	1	
19	335946	NEEDLE ROLLER SET (4 PCS.)	4	
20	335944	SLEEVE	1	
21	328055	RING GEAR	1	
22	327139	CARRIER	1	
23	312705	PLANET GEAR (C) SET (3 PCS.)	3	
24	312704	WASHER (A)	1	
25	335959	REAR CASE	1	
26	324357	SCREW SET D3 X 12 (4 PCS.)	4	
27	332017	SHIFT ARM	1	
28	332013	SLIDE RING GEAR	1	
29	332012	PINION (C)	1	
30	332019	PLANET GEAR (A) SET (6 PCS.)	6	
31	332014	PINION (B)	1	
32	332023	FIRST RING GEAR	1	
33	312716	WASHER (B)	1	
34	312698	MOTOR SPACER	1	
35	332020	MOTOR DC 18V	1	
36	317333	MACHINE SCREW (W/SP. WASHER) M4 X 6	2	
* 37	337136	INTERNAL WIRE FERRITE SET	1	FOR GBR
* 38	337117	INTERNAL WIRE (BLACK) 110L	1	FOR USA,CAN
39	336851	HOUSING (A).(B) SET	1	
40	336855	SHIFT KNOB	1	
41	327002	LOCK NUT M4 (BLACK)	2	
* 42	324499	INTERNAL WIRE (RED) 140L	1	FOR USA,CAN
43	336856	PUSHING BUTTON	1	
* 44	336630	SWITCH TERMINAL SET	1	
* 44	336632	SWITCH TERMINAL SET	1	FOR GBR
* 45	337137	SUPPORT (D)	1	FOR GBR
46	313687	TAPPING SCREW (W/FLANGE) D3 X 16 (BLACK)	9	
47		NAME PLATE	1	
* 48	335788	BATTERY BSL 1825 (EUROPE,AUS,NZL)	2	INCLUD.505

PARTS

DV 18DGL

ITEM NO.	CODE NO.	DESCRIPTION	NO. USED	REMARKS
* 48	333352	BATTERY BSL 1815 (EUROPE)	2	INCLUD.505
* 48	330139	BATTERY BSL 1815 (USA,CAN)	2	INCLUD.505
* 49	337192	WIRING SET	1	INCLUD.35,38,42,44
* 49	337193	WIRING SET	1	INCLUD.35,37,44,45 FOR GBR

STANDARD ACCESSORIES

ITEM NO.	CODE NO.	DESCRIPTION	NO. USED	REMARKS
501	983006	+ DRIVER BIT NO.2 65L	1	
502		CHARGER (MODEL UC 18YKSL)	1	
* 503	336642	CASE	1	FOR GBR
* 504	332825	CASE	1	FOR USA,CAN
505	329897	BATTERY COVER	1	
* 506		TORCHLIGHT (MODEL UB 18DAL)	1	FOR USA,CAN

OPTIONAL ACCESSORIES

ITEM NO.	CODE NO.	DESCRIPTION	NO. USED	REMARKS
601	955657	- DRIVER BIT (A) 3MM X 70L	1	
602	955659	- DRIVER BIT (A) 4MM X 70L	1	
603	955674	- DRIVER BIT (A) 6MM X 70L	1	
604	983004	+ DRIVER BIT NO.1 65L	1	
605	983011	+ DRIVER BIT NO.3 65L	1	