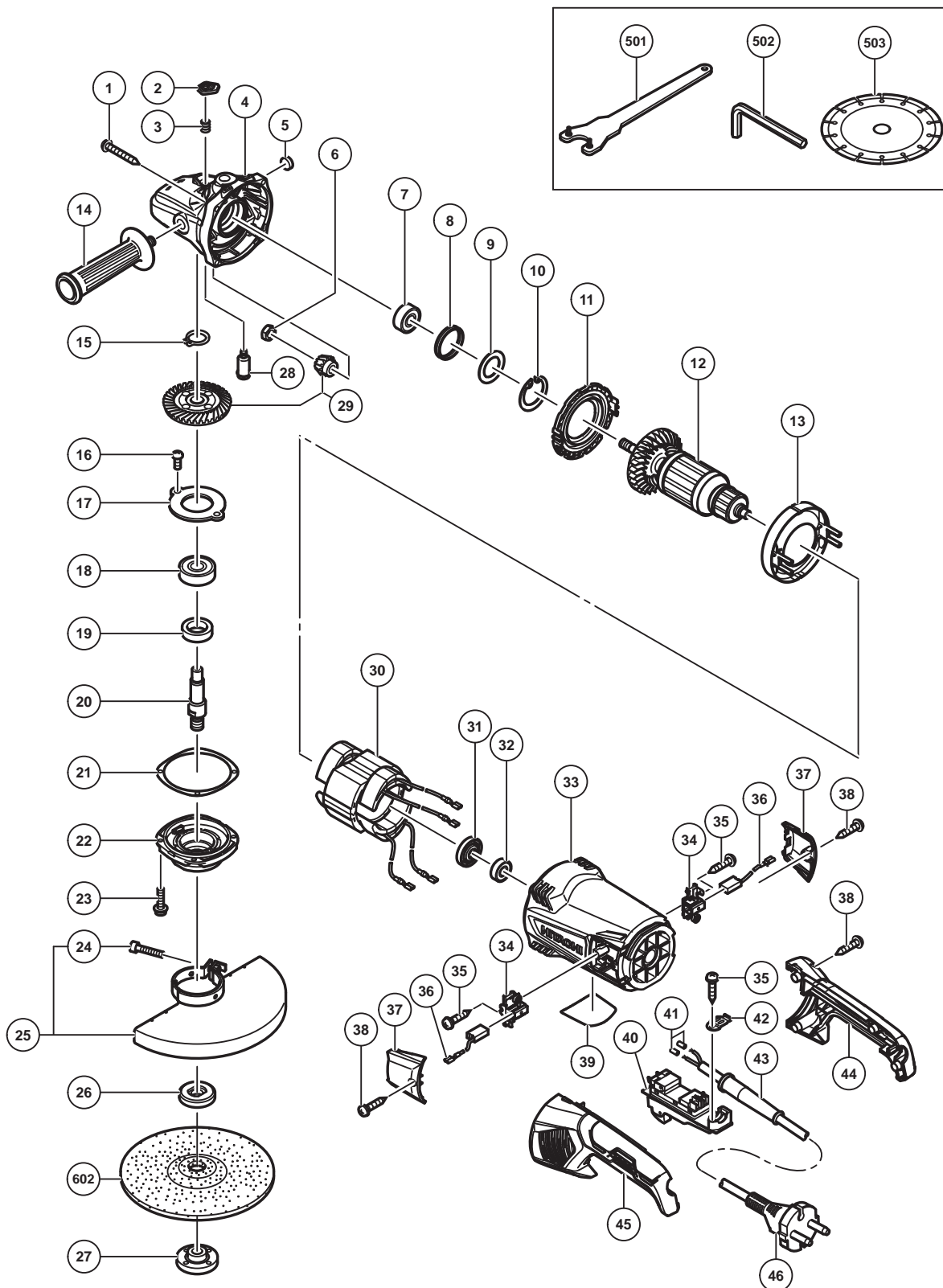


ELECTRIC TOOL PARTS LIST

■ DISC GRINDER
Model G 18ST

2014-12-11
(E1)



PARTS

G 18ST

ITEM NO.	CODE NO.	DESCRIPTION	NO. USED	REMARKS	
1	323209	TAPPING SCREW (W/FLANGE) D5 X 35 (BLACK)	4		
2	337641	PUSHING BUTTON	1		
3	320219	SPRING	1		
4	337650	GEAR COVER ASS'Y	1	INCLUD.2,3,5,7-10,28	
5	937033	FELT WASHER	1		
6	320226	SPECIAL NUT M10	1		
7	6301VV	BALL BEARING 6301VVCMP2L	1		
8	330031	RUBBER RING	1		
9	337642	WASHER	1		
10	948391	RETAINING RING FOR D40 HOLE	1		
11	337640	FAN GUIDE (B)	1		
*	12	360982C	ARMATURE 110V	1	
*	12	360982E	ARMATURE 220V-230V	1	
*	12	360982F	ARMATURE 240V	1	
13	337639	FAN GUIDE (A)	1		
14	937981	SIDE HANDLE FOR M14	1		
15	939542	RETAINING RING FOR D12 SHAFT (10 PCS.)	1		
16	949236	MACHINE SCREW M5 X 10 (10 PCS.)	2		
17	320229	BEARING COVER (B)	1		
18	6302VV	BALL BEARING 6302VVCMP2L	1		
19	990852	FELT PACKING (B)	1		
20	320234	SPINDLE	1		
21	320228	SEAL PLATE	1		
22	320227	PACKING GLAND	1		
23	994192	HEX. SOCKET HD. BOLT (W/FLANGE) M5 X 16	4		
24	949760	HEX. SOCKET HD. BOLT M8 X 25 (10 PCS.)	1		
25	338291	WHEEL GUARD ASS'Y	1	INCLUD.24	
26	937907Z	WHEEL WASHER (C)	1		
27	937909Z	WHEEL NUT M14 X 2	1		
28	306890	LOCK PIN	1		
29	337919	GEAR AND PINION SET	1		
*	30	340888C	STATOR 110V	1	
*	30	340888E	STATOR 220V-230V	1	
*	30	340888F	STATOR 240V	1	
31	330029	DUST SEAL	1		
32	6000VV	BALL BEARING 6000VVCMP2L	1		
33	337643	HOUSING	1		
34	337646	BRUSH HOLDER	2		
35	984750	TAPPING SCREW (W/FLANGE) D4 X 16	3		
*	36	999059	CARBON BRUSH (1 PAIR)	2	
*	36	999059	CARBON BRUSH (1 PAIR)	1	FOR BRA
*	36	999093	CARBON BRUSH (AUTO STOP TYPE) (1 PAIR)	1	FOR BRA
37	337649	BRUSH COVER	2		
38	305812	TAPPING SCREW (W/FLANGE) D4 X 16 (BLACK)	6		
39		NAME PLATE	1		
*	40	320239	SWITCH (2P PILLAR TYPE) W/SAFETY LOCK	1	OFF/ON LOCK
*	40	320238	SWITCH (2P PILLAR TYPE) W/SAFETY LOCK	1	OFF/LOCK
41	981373	TUBE (D)	2		
42	331336	CORD CLIP	1		
*	43	958049	CORD ARMOR D8.2	1	

