

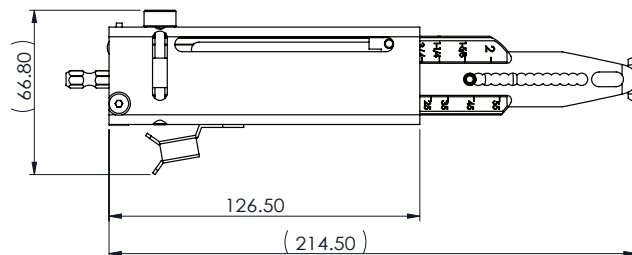
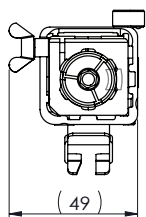
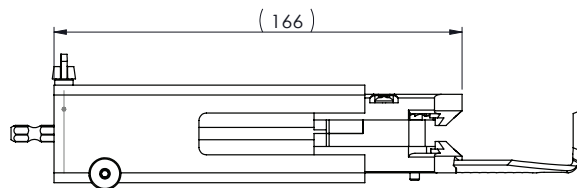
Metabo HPT SuperDrive Auto-feed Screw System
WARRANTY

Metabo HPT SuperDrive tools and system components are warranted to the original retail purchaser to be free from defects in material and workmanship one year from the date of purchase. A dated sales receipt or proof of purchase is required to make a warranty claim.

The warranty shall only cover defects in material or workmanship. The warranty shall not cover normal wear items or issues arising from improper use, as determined by Koki Holdings America Ltd. in its absolute discretion.

Koki Holdings America Ltd. is not responsible for malfunctions, failures or defects resulting from misuse, abuse, neglect, alteration, or modification of the Metabo HPT SuperDrive tool and system components. Koki Holdings America Ltd. disclaims any warranty regarding fitness for any particular use or application of its tools or fasteners. No other warranties, representations or promises as to the quality or performance of the Metabo HPT SuperDrive fastening tool and system components are made, other than those contained herein.

ANY IMPLIED WARRANTY GRANTED UNDER STATE LAW, INCLUDING WARRANTIES OR MERCHANTABILITY OR FITNESS FOR A PARTICULAR PURPOSE, ARE LIMITED TO DURATION OF THE EXPRESS WARRANTY GRANTED HEREIN. KOKI HOLDINGS AMERICA LTD. SHALL NOT BE LIABLE FOR DIRECT, INDIRECT, INCIDENTAL, PUNITIVE, OR CONSEQUENTIAL DAMAGES. SOME STATES DO NOT ALLOW FOR EXCLUSIONS OR LIMITATIONS OF DAMAGES SO THE ABOVE LIMITATIONS MAY NOT APPLY.



metabo HPT

SuperDrive N7 Series

SAFETY NOTES:

1. Make sure the SuperDrive N7 tool is powered down and unplugged before replacing a bit, or removing the indexing unit.
2. Never use SuperDrive N7 while standing on an unstable platform.
3. Never point the driver at yourself or others in the work area.
4. Avoid wearing loose clothing, jewelry or other items that could become caught in the tool.
5. Make sure N7 is clear of clothing, hair or other loose items while operating the tool.
6. Make sure the tool is powered down and unplugged before performing any adjustment or repair to the indexing module.
7. Always use collated screws and strips that are designed for this tool. See Technical Data below.

TECHNICAL DATA:

1. Use SuperDrive N7 with #6-#12 gauge screws only.
2. Use SuperDrive N7 with screw lengths from 3/4-in (19mm) - 2-3/16-in (55mm) only.
3. SuperDrive N7 is designed for fastener head diameters up to 3/8-in.
4. Only use bits with a 5mm shank diameter with SuperDrive N7.
5. SuperDrive N7 is designed to work best with Metabo HPT 115411 bit tips.

Operating Instructions for SuperDrive® N7

OPERATING N7:

1. Remove the factory nose piece and bit from the driver.



A.



B.



C.

metabo HPT

SuperDrive N7 Series

OPERATING N7:

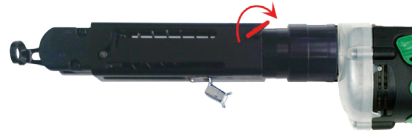
2. Attach SuperDrive N7 coupler to the Metabo HPT driver.



3. Insert SuperDrive bit tip into the screw gun.



4. Slide the N7 indexing module onto the coupler and tighten the locking wing nut clockwise.



5. Insert a collated strip of screws into the indexing module guiding the strip through the drywall clip and into the indexing guide.



6. Position the first screw in the strip just behind the bit tip guide. The screw will slide into position as the SuperDrive N7 tool is pressed to the substrate.

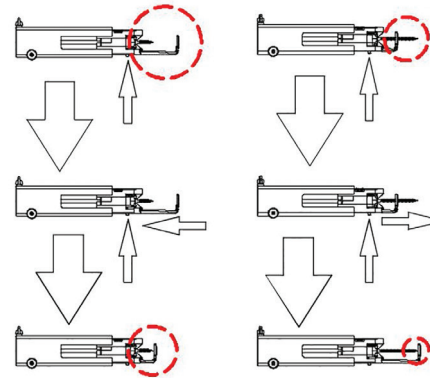


ADJUSTING FOR FASTENER LENGTH

(Coarse adjustment):

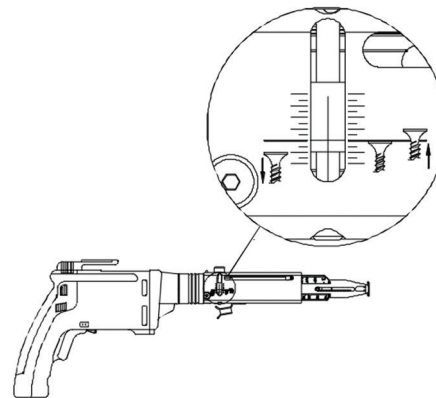
Press button on the nose piece attachment to release the nose piece. The nose piece can then be slid up or down to accommodate a new fastener length.

Release the button to lock the nose piece in the new position.



FINE DEPTH ADJUSTMENT:

Twist the knurled wheel at the top of the N7 indexing module to make fine depth adjustment. An adjustment scale and guide are located on the top of the tool.



SUGGESTIONS FOR OPERATION:

For best results position N7 at a right angle to the work surface as much as is possible.

Allow the driver to fully spin up before pressing SuperDrive N7 to the substrate surface.

Press SuperDrive N7 to the substrate maintaining even and consistent pressure until the faster is fully driven in.

Check fastener depth and make any necessary fine adjustment.

Keep the driver fully spun up as subsequent screws are driven.

Check to see that the Metabo HPT driver is in the right (R) or forward position before operating the tool.

