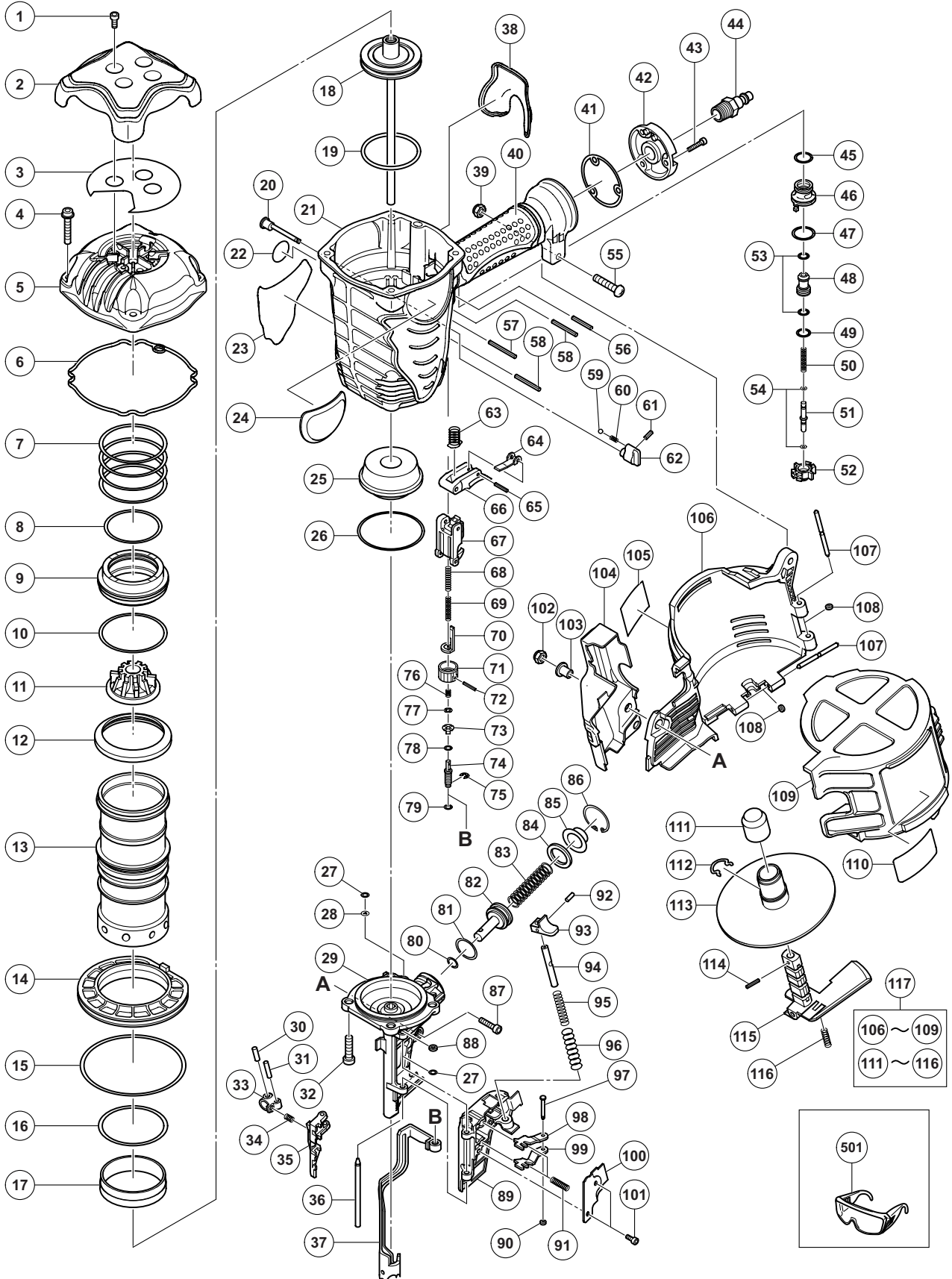


PNEUMATIC TOOL PARTS LIST

COIL NAILER Model NV 90AG

2013·1·25
(E1)



PARTS

NV 90AG

ITEM NO.	CODE NO.	DESCRIPTION	NO. USED	REMARKS
1	949-665	HEX. SOCKET HD. BOLT M5 X 14 (10 PCS.)	4	
2	884-952	HEAD GUARD	1	
3	886-454	SHEET	1	
4	878-877	HEX. SOCKET HD. BOLT (W/FLANGE) M6 X 30	4	
5	886-261	EXHAUST COVER	1	
6	886-455	GASKET (A)	1	
7	886-456	HEAD VALVE SPRING	1	
8	884-947	O-RING (I.D 49.4)	1	
9	884-946	HEAD VALVE	1	
10	884-948	O-RING (I.D 59.4)	1	
11	884-950	EXHAUST VALVE RUBBER	1	
12	884-945	VALVE RUBBER	1	
13	888-032	CYLINDER	1	
14	884-944	CYLINDER PLATE	1	
15	886-481	O-RING (I.D 94.6)	1	
16	886-480	O-RING (I.D 59.6)	1	
17	886-483	CYLINDER RING	1	
18	888-033	PISTON	1	
19	884-958	PISTON O-RING	1	
20	887-668	CHANGE ROD (D)	1	
21	888-116	BODY ASS'Y	1	INCLUD. 38, 40
* 22	883-513	WARNING LABEL (A)	1	FOR EUROPE
23		NAME PLATE	1	
24	886-356	HITACHI LABEL	1	
25	888-100	PISTON BUMPER	1	
26	886-482	O-RING (I.D 60)	1	
27	874-436	O-RING (P-4)	2	
28	888-101	WASHER	1	
29	888-034	NOSE	1	
30	949-497	ROLL PIN D4 X 16 (10 PCS.)	1	
31	888-043	NEEDLE ROLLER	1	
32	306-437	NYLOCK HEX. SOCKET HD. BOLT M8 X 30	4	
33	878-132	FEEDER ARM	1	
34	888-108	FEEDER SPRING	1	
35	888-042	FEEDER	1	
36	887-847	NAIL GUIDE SHAFT	1	
37	888-046	PUSHING LEVER (A)	1	
38	886-260	GRIP RUBBER (B)	1	
39	963-837	NYLON NUT M6	1	
40		GRIP RUBBER (A)	1	SUPPLIED WITH ITEM NO. 601, 602
41	884-342	GASKET (B)	1	
42	881-949	CAP	1	
43	949-821	HEX. SOCKET HD. BOLT M5 X 16 (10 PCS.)	3	
44	887-863	AIR PLUG NPT 3/8	1	
45	877-763	FEED PISTON O-RING (I.D. 14)	1	
46	884-963	VALVE BUSHING (B)	1	
47	873-570	O-RING (P-18)	1	
48	884-964	VALVE PISTON	1	
49	872-654	O-RING (1AP-10)	1	
50	887-178	PLUNGER SPRING	1	

PARTS

NV 90AG

ITEM NO.	CODE NO.	DESCRIPTION	NO. USED	REMARKS
51	884-965	PLUNGER	1	
52	884-962	VALVE BUSHING (A)	1	
53	676-531	O-RING (P-7)	2	
54	878-888	O-RING (I.D. 1.8)	2	
55	888-049	SCREW M6 (BLACK)	1	
56	887-621	ROLL PIN D3 X 25	1	
57	887-675	ROLL PIN D3 X 35	1	
58	884-975	ROLL PIN D3 X 32	2	
59	959-155	STEEL BALL D3.97 (10 PCS.)	1	
60	887-673	SPRING	1	
61	887-458	ROLL PIN D3 X 10 (10 PCS.)	1	
62	887-674	CHANGE KNOB (D)	1	
63	887-682	TRIGGER ARM SPRING	1	
64	887-755	TRIGGER ARM (D)	1	
65	881-951	ROLL PIN D2.5 X 16	1	
66	887-756	TRIGGER (D) ASS'Y	1	INCLUD. 64, 65
67	887-672	PUSHING LEVER GUIDE (D)	1	
* 68	886-878	PUSH LEVER SPRING (C)	1	
* 68	886-860	PUSH LEVER SPRING (A)	1	FOR AUS, USA, CAN
* 69	886-879	PUSH LEVER SPRING (D)	1	
* 69	886-861	PUSH LEVER SPRING (B)	1	FOR AUS, USA, CAN
70	887-664	PUSHING LEVER (D)	1	
71	886-872	ADJUSTER	1	
72	886-873	ROLL PIN D2 X 16	1	
73	886-868	ADJUSTER PLATE (A)	1	
74	888-047	PUSHING LEVER (B)	1	
75	872-971	RETAINING RING (E-TYPE) FOR D3 SHAFT	1	
76	886-870	ADJUSTER SPRING	1	
77	886-869	ADJUSTER PLATE (C)	1	
78	981-317	O-RING (S-4)	1	
79	872-822	O-RING (S-5)	1	
80	872-645	O-RING (P-9)	1	
81	944-486	O-RING (1AP-20)	1	
82	888-044	FEED PISTON	1	
83	888-045	FEED SPRING	1	
84	877-711	BUMPER	1	
85	880-331	FEED PISTON COVER	1	
86	939-555	RETAINING RING FOR D28 HOLE (10 PCS.)	1	
87	888-102	HEX. SOCKET HD. BOLT M5 X 22	1	
88	880-319	SHAFT RING	1	
89	888-035	NAIL GUIDE	1	
90	888-104	RUBBER RING	1	
91	888-038	STOPPER SPRING	2	
92	888-103	ROLL PIN D4 X 10	1	
93	888-105	GUIDE LOCK (A)	1	
94	888-041	LOCK SHAFT	1	
95	877-372	SPRING	1	
96	878-425	SPRING	1	
97	888-039	SHAFT	1	
98	888-036	NAIL STOPPER (A)	1	

