

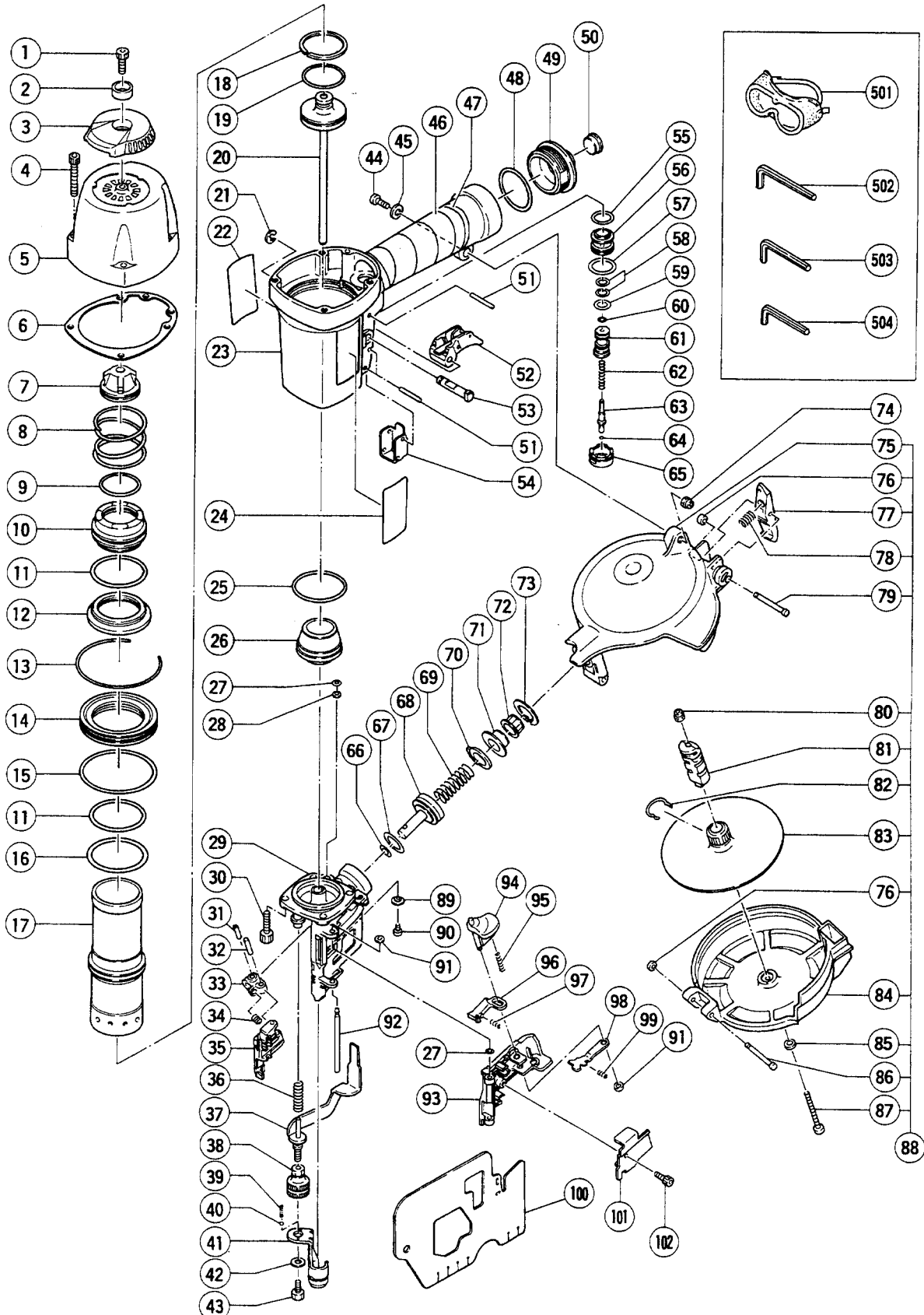
HITACHI

LIST NO. 1089

PNEUMATIC TOOL PARTS LIST

■ COIL NAILER
Model NV 65AH

1998·6·30
(E1)



PARTS

NV 65AH

ITEM NO.	CODE NO.	DESCRIPTION	NO. USED	REMARKS
1	949-755	HEX. SOCKET HD. BOLT M6X16 (10 PCS.)	1	
2	880-515	PLATE	1	
3	880-514	TOP COVER	1	
4	949-822	HEX. SOCKET HD. BOLT M5X35 (10 PCS.)	4	
5	880-670	EXHAUST COVER	1	
6	880-358	GASKET	1	
7	881-761	EXHAUST VALVE RUBBER (A)	1	
8	880-356	HEAD VALVE SPRING	1	
9	980-879	O-RING (S-34)	1	
10	880-354	HEAD VALVE	1	
11	878-714	CYLINDER O-RING (C) I.D 44.7	2	
12	881-760	HEAD VALVE RUBBER (A)	1	
13	880-669	RETAINING RING	1	
14	880-667	CYLINDER PLATE	1	
15	877-312	CYLINDER O-RING (I.D 63.1)	1	
16	878-716	O-RING (P-46)	1	
17	880-668	CYLINDER	1	
18	878-691	PISTON RING	1	
19	880-311	O-RING (I.D 34.2)	1	
20	880-650	PISTON	1	
21	955-479	RETAINING RING (E-TYPE) FOR D6 SHAFT	1	
22	878-184	WARNING LABEL	1	
23	882-672	BODY ASS'Y	1	INCLUD.46,47
24		NAME PLATE	1	
25	880-362	O-RING (S-44)	1	
26	882-676	PISTON BUMPER	1	
27	874-436	O-RING (P-4)	2	
28	878-279	WASHER	1	
29	882-677	NOSE	1	
30	880-675	NYLOCK HIGH TENSION BOLT M6X20	4	
31	949-770	ROLL PIN D4X14 (10 PCS.)	1	
32	880-659	NEEDLE ROLLER	1	
33	878-132	FEEDER ARM	1	
34	878-340	FEEDER SPRING	1	
35	882-671	FEEDER	1	
36	880-080	SAFETY SPRING	1	
37	880-661	PUSHING LEVER (B)	1	
38	880-383	ADJUSTER (B)	1	
39	880-175	ADJUSTER SPRING	2	
40	959-148	STEEL BALL D3.175 (10 PCS.)	2	
41	880-333	PUSHING LEVER (A)	1	
42	880-081	WASHER	1	
43	949-657	HEX. SOCKET HD. BOLT M6X12 (10 PCS.)	1	
44	302-196	MACHINE SCREW M5X20 (BLACK)	1	
45	876-205	WASHER	1	
46	881-768	GRIP TAPE (A)	1	
47	880-407	TAPE	2	
48	880-183	O-RING (I.D 37.2)	1	
49	880-379	CAP	1	
50	872-035	DUST CAP	1	
51	949-865	ROLL PIN D3X28 (10 PCS.)	3	

* : ALTERNATIVE PARTS

6 - 98

PARTS

NV 65AH

ITEM NO.	CODE NO.	DESCRIPTION	NO. USED	REMARKS
52	880-674	TRIGGER (A)	1	
53	881-952	TRIGGER PIN	1	
54	880-361	PUSHING LEVER GUIDE	1	
55	877-699	HEAD VALVE O-RING (I.D 16.8)	1	
56	878-881	VALVE BUSHING (B)	1	
57	878-885	O-RING (S-18)	1	
58	878-925	O-RING (I.D 8.8)	2	
59	878-887	O-RING (I.D 11)	1	
60	981-317	O-RING (S-4)	1	
61	880-672	VALVE PISTON (B)	1	
62	878-884	PLUNGER SPRING	1	
63	880-673	PLUNGER (A)	1	
64	878-888	O-RING (I.D 1.8)	1	
65	880-671	VALVE BUSHING (A)	1	
66	872-645	O-RING (P-9)	1	
67	880-330	O-RING (P-21)	1	
68	882-673	FEED PISTON	1	
69	878-603	FEED SPRING	1	
70	880-367	BUMPER	1	
71	880-331	FEED PISTON COVER	1	
72	878-305	MAGAZINE BUSHING	1	
73	939-555	RETAINING RING FOR D28 HOLE (10 PCS.)	1	
74	877-371	NYLON NUT M5	1	
75	880-335	MAGAZINE	1	
76	877-826	FEEDER SHAFT RING	2	
77	880-336	MAGAZINE STOPPER	1	
78	880-337	STOPPER SPRING	1	
79	880-338	PIN D4X35.5	1	
80	876-465	NYLON NUT M4	1	
81	882-675	HOLDER SHAFT	1	
82	880-398	RATCHET SPRING	1	
83	880-665	NAIL HOLDER	1	
84	882-682	MAGAZINE COVER	1	
85	949-423	WASHER M4 (10 PCS.)	1	
86	880-341	PIN D4X40	1	
87	949-230	MACHINE SCREW M4X50 (10 PCS.)	1	
88	882-674	MAGAZINE ASS'Y	1	INCLUD.75-87
89	878-337	SLEEVE (B)	1	
90	949-766	HEX. SOCKET HD. BOLT M4X6 (10 PCS.)	1	
91	880-319	SHAFT RING	2	
92	880-658	NAIL GUIDE SHAFT	1	
93	882-678	NAIL GUIDE	1	
94	880-318	GUIDE LOCK	1	
95	880-446	SPRING	1	
96	882-679	NAIL STOPPER (A)	1	
97	301-631	SPRING (F)	1	
98	882-680	NAIL STOPPER (B)	1	
99	880-494	STOPPER SPRING	1	
100	882-683	COVER	1	
101	882-681	NAIL GUIDE COVER	1	
102	880-413	NYLOCK HEX. SOCKET HD. BOLT M4X10	1	

STANDARD ACCESSORIES

NV 65AH

ITEM NO.	CODE NO.	DESCRIPTION	NO. USED	REMARKS
501	875-769	EYE PROTECTOR	1	
502	944-459	HEX. BAR WRENCH 5MM	1	
503	944-458	HEX. BAR WRENCH 4MM	1	
504	943-277	HEX. BAR WRENCH 3MM	1	

OPTIONAL ACCESSORIES

ITEM NO.	CODE NO.	DESCRIPTION	NO. USED	REMARKS
601	878-344	NOSE CAP	1	
602	880-517	CASE	1	
603	881-973	SEQUENTIAL FIRE PARTS SET	1	

* : ALTERNATIVE PARTS