

# HITACHI

Hitachi Koki U.S.A., Ltd.  
3950 Steve Reynolds Blvd.  
Norcross, Georgia 30093  
**(800) 70-ORDER**

## OPERATING INSTRUCTIONS FOR THE NV50AP2 **plasti-Tacker<sup>™</sup>** PLUS NAILER



### IMPORTANT

This document serves as an addendum to the NV50A1 instruction manual. Carefully read and fully understand NV50A1 and NV50AP2 instructions before using the NV50AP2 plasti-Tacker PLUS.

**Failure to follow instructions could lead to death or serious injury!**

Always keep these instructions available for future reference and for use by others.

Use only for these intended applications. For installation of:

- ◆ Roofing felt
- ◆ Foam board
- ◆ Moisture barrier/house wrap

### SPECIFICATIONS

Operating pressure	70—120psi
Weight	7.0 lbs.
Nail capacity	350 nails (1 coil)
Washer capacity	350 plasti-Top <sup>®</sup> plastic washers (1 reel) or 350 round Top <sup>®</sup> steel washers (1 reel)
Air Consumption	.035 ft <sup>3</sup> /cycle at 100 psi (.99 ltr/cycle at 6.9 bar) .99 ltr/cycle at 7 kgf/cm <sup>2</sup>
Air Inlet	3/8 NPT Thread

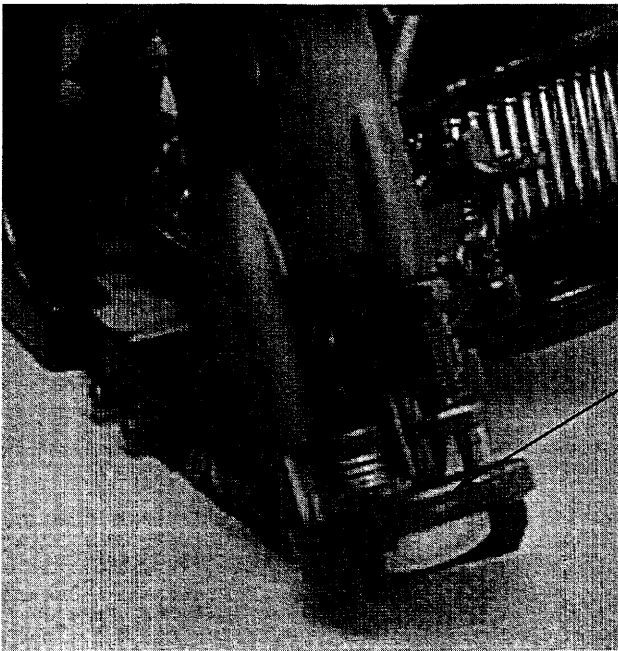
Like the NV50A1, the NV50AP2 uses only wire-collated nails. The length of usable nails varies from a minimum of **7/8" (22 mm)** to a maximum of **2" (50mm)**. Dimensions are described in detail on page 8 of the NV50A1 manual. Wire-collated nails and plasti-Top<sup>®</sup> or round Top<sup>®</sup> collated washers are only available in ProPac kits. For current ProPac kit options and availability contact your local Hitachi Power Tools dealer or call 1-800-70-ORDER.

## **OPERATION**

### **ALWAYS disconnect the air hose from the NV50AP2 when:**

- ◆ performing maintenance and inspections
- ◆ loading nails or plasti-Top® or round Top® collated washers
- ◆ clearing a nail or collated washer jam
- ◆ the tool is not in use
- ◆ leaving the work area
- ◆ moving it to another location
- ◆ handing it to another person

**ALWAYS WEAR ANSI Z87.1 APPROVED EYE PROTECTION TO REDUCE RISK OF INJURY. SAFETY GOGGLES HAVE BEEN PROVIDED WITH THE NV50AP2 TO PROMOTE YOUR PERSONAL SAFETY.**



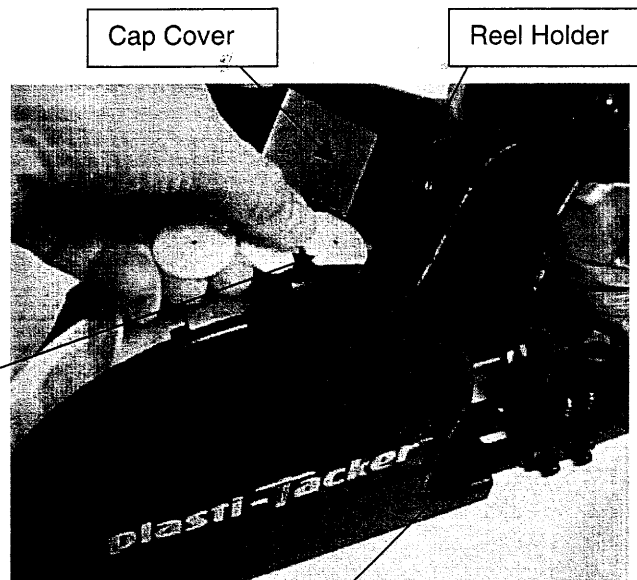
Insure Push Lever Assembly is free to travel up and down. Clean and lubricate Push Lever Assembly and washer feed path before each day of use with a silicone spray lubricant for optimal performance.

**Any binding of the Push Lever Assembly could potentially result in a nail being fired when not intended to.**

Take the NV50AP2 to your nearest Hitachi Power Tools Authorized Service Center for repair if the Push Lever Assembly fails to operate smoothly or if binding occurs.

#### **To load washers:**

1.) Lift lower Cap Cover tab and rotate Cap Cover away from Reel Holder. Insert a reel of washers into Reel Holder with the end of the washer coil coming over the washer reel top. Feed washers into top of Reel Holder with thumb until washers become visible at the Holder Reel exit. Return Cap Cover to its normal position.

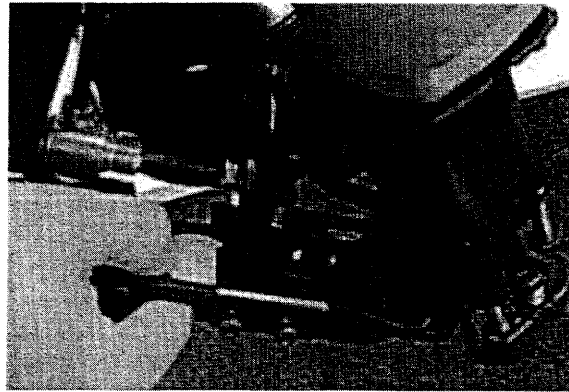


Cap Cover

Reel Holder

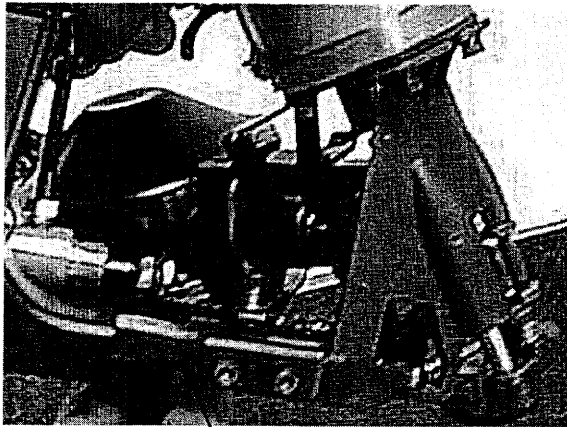
Reel Holder exit

2.) Feed the washers into the Track Assembly.



Track Assembly

Picker



Picker feed lever

3.) Pull back on the Picker feed lever to feed the washers forward.

4.) Cycle the Picker until a washer is directly under the Push Lever Assembly.



**NOTE:**

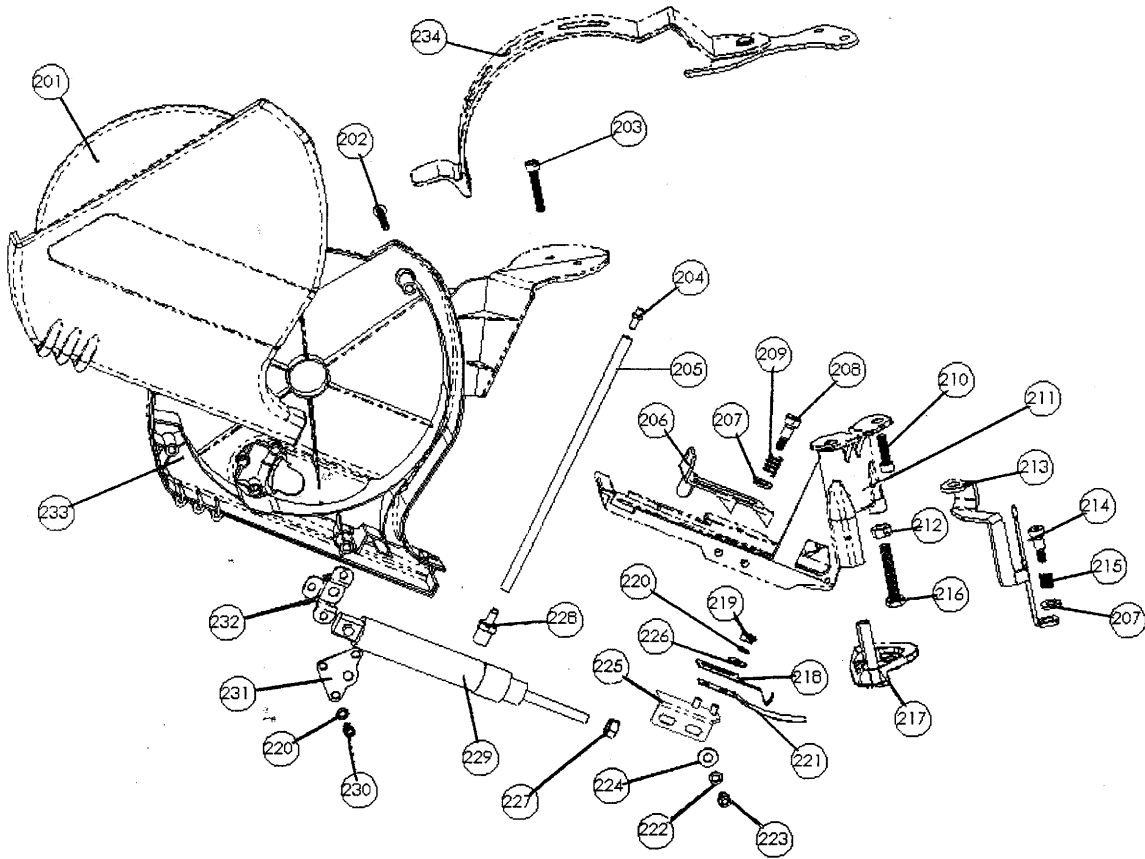
Nail depth of drive has been factory preset. Adjust air source pressure to obtain desired depth of drive for nail. Never exceed 120 psi.

After loading collated nails per the NV50A1 instructions, the NV50AP2 is now ready for use.

Nails and washers should be fired only by first depressing the Push Lever Assembly against the work piece surface in which the nail is to be driven and then pulling the trigger or by pulling the trigger and then depressing the Push Lever Assembly against the work piece surface. Make sure you pull the nailer completely away from the work piece after firing a nail before firing another nail. Otherwise, recoil may occur and cause unintended firing or the next washer may not feed properly. Ensure nail is driven perpendicular to work surface for best performance.

# NV50AP2 PARTS LIST

(Refer to NV50A1 Parts List for parts not shown here)



ITEM NO.	PART NO.	DESCRIPTION	QTY.	ITEM NO.	PART NO.	DESCRIPTION	QTY.
201	726010	Holder Reel - Front Assy	1	218	726036	Indexing Spring	1
202	725973R	Screw, PT M4-35mm	3	219	725976R	Nut, Hex #8-32	2
203	726011R	Screw, M5x30 Hex Socket Cap w/washers	2	220	725975R	Washer, Split #8	5
204	726003R	Barb Fitting, Nailor	1	221	725982R	Retaining Spring	1
205	726004R	Tubing (7 1/2")	1	222	725995R	Washer, Split #10	2
206	726035R	Picker	1	223	725996R	Screw, #10-32 Socket Cap (3/8")	2
207	725971R	Washer, Shoulder Screw	2	224	725994R	Washer, Flat #10	2
208	725992R	Screw, Shoulder 1/4 x 1/2"	1	225	725985R	Retainer	1
209	725979R	Compression Spring 0.625	1	226	725974R	Washer, Flat #8	2
210	726018R	Screw, M5X20 Hex Socket Cap w/Nylock	2	227	725972R	Nut, Hex 1/4-28	2
211	726032R	Track	1	228	726002R	Barb Fitting, Cylinder	1
212	725993R	Nut, Hex 1/4-20	1	229	725990R	Cylinder	1
213	726019R	Push Lever	1	230	726017R	Screw, #8-32 Socket Cap (3/8")	3
214	726022R	Screw, Shoulder 1/4 x 3/8"	1	231	725986R	Bracket Cap	1
215	726023R	Compression Spring 0.375	1	232	725987R	Cylinder Shroud	1
216	725997R	Stop Bolt	1	233	725988R	Holder Reel - Rear	1
217	726034	Foot Assembly	1	234	726042	Cap Cover Assy	1

**Hitachi Koki U.S.A., Ltd.**

3950 Steve Reynolds Blvd.  
Norcross, GA 30093

PRINTED IN U.S.A.  
CODE: NV50AP20012A