

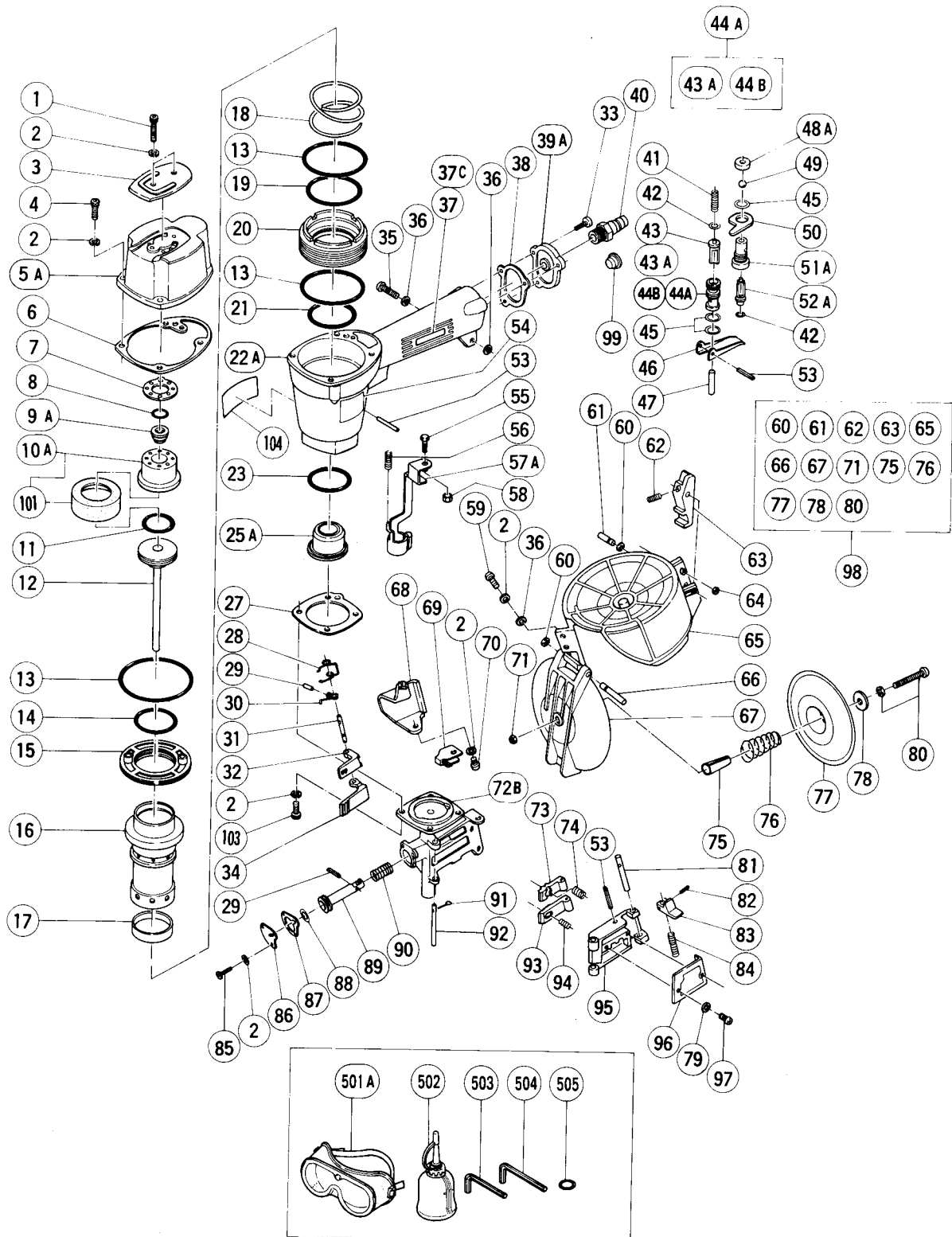
## PNEUMATIC TOOL PARTS LIST

■ COIL NAILER

Model NV 50AA PLASTIC COLLATION

1997 · 2 · 20

(E5)



## PARTS

NV 50AA

ITEM NO.	CODE NO.	DESCRIPTION	NO. USED	REMARKS
1	949-662	HEX. SOCKET HD. BOLT M5X25 (10 PCS.)	2	
2	949-454	SPRING WASHER M5 (10 PCS.)	15	
3	876-179	TOP COVER	1	
4	949-757	HEX. SOCKET HD. BOLT M5X20 (10 PCS.)	4	
* 5A	877-917	EXHAUST COVER	1	
* 5A	880-275	EXHAUST COVER (B)	1	FOR USA,EUROPE
* 6	876-176	GASKET (B)	1	
* 6	876-712P	GASKET (F)	1	FOR USA,EUROPE
* 7	876-178	GASKET (C)	1	
* 7	876-713P	GASKET (G)	1	FOR USA,EUROPE
8	872-821	VALVE O - RING	1	TILL 1.1987
9A	878-417	EXHAUST VALVE	1	
* 10	877-129	HEAD CAP ASS'Y	1	INCLUD.101
* 10A	876-711P	HEAD CAP	1	FOR USA,EUROPE
11	876-174	PISTON O - RING	1	
12	877-127	PISTON	1	
13	876-161	O - RING (S - 65)	3	
14	877-126	CYLINDER O - RING (D)	1	
15	876-168	CYLINDER PLATE	1	
16	876-632	CYLINDER	1	
17	876-167	CYLINDER RING	1	
18	876-172	CYLINDER SPRING	1	
19	877-123	CYLINDER O - RING (A)	1	
20	877-122	CYLINDER GUIDE	1	
21	877-124	CYLINDER O - RING (B)	1	
* 22A	877-944	BODY	1	
* 22A	876-709P	BODY (B)	1	FOR USA,EUROPE
23	877-125	CYLINDER O - RING (C)	1	
25A	878-359	PISTON BUMPER	1	
27	876-673	GASKET (A)	1	
28	876-717	MAIN FEEDER SPRING (A)	1	
29	949-551	ROLL PIN D2.5X10 (10 PCS.)	2	
30	876-691	SUB FEEDER SPRING	1	
31	876-689	FEEDER SHAFT	1	
32	876-688	MAIN FEEDER	1	
33	949-821	HEX. SOCKET HD. BOLT M5X16 (10 PCS.)	3	
34	876-707	SUB FEEDER	1	
35	949-242	MACHINE SCREW M5X22 (10 PCS.)	1	
36	876-205	WASHER	4	
37	950-565	HITACHI LABEL	1	TILL 7.1986
37C	878-182	HITACHI LABEL	1	SINCE 8.1986
38	877-131	GASKET (D)	1	
* 39A	878-730	CAP	1	
* 39A	880-036	CAP	1	FOR USA,EUROPE
40	874-782	AIR PLUG PT 1/4	1	
41	875-643	PLUNGER SPRING	1	
42	874-820	PLUNGER O - RING	2	
43	876-739	SAFETY PLUNGER (A)	1	TILL 7.1986
43A	878-122	PLUNGER (A)	1	SINCE 8.1986
44A	876-764	VALVE BUSHING ASS'Y	1	INCLUD.43A,44B TILL 7.1986
44B	878-266	VALVE BUSHING	1	SINCE 8.1986

\*: ALTERNATIVE PARTS

2 - 97

## PARTS

NV 50AA

ITEM NO.	CODE NO.	DESCRIPTION	NO. USED	REMARKS
45	875-638	O - RING (S - 12)	3	
46	876-203	TRIGGER	1	
47	875-642	SAFETY PLUNGER (B)	1	
48A	878-734	VALVE PACKING	1	
49	875-645	URETHANE BALL (C) D7.14	1	
50	875-644	VALVE PLATE	1	
51A	877-335	TRIGGER VALVE BUSHING	1	
52A	878-121	TRIGGER PLUNGER	1	
53	949-866	ROLL PIN D3X30 (10 PCS.)	3	
54		NAME PLATE	1	
55	875-650	SAFETY BOLT	1	
* 56	876-676	SAFETY SPRING	1	
* 56	877-943	SPRING	1	FOR EUROPE
57A	877-941	PUSHING LEVER (G)	1	
58	949-555	NUT M5 (10 PCS.)	1	
59	949-240	MACHINE SCREW M5X18 (10 PCS.)	2	
60	872-971	RETAINING RING (E - TYPE) FOR D3 SHAFT	2	
61	877-150	STOPPER PIN	1	
62	877-149	STOPPER SPRING	1	
63	877-151	MAGAZINE STOPPER	1	
64	945-255	U - NUT M5	1	
65	877-146	MAGAZINE	1	
66	877-152	HINGE PIN	1	
67	877-147	MAGAZINE COVER	1	
68	877-138	GUARD	1	
69	877-145	GUARD WASHER	1	
70	949-237	MACHINE SCREW M5X12 (10 PCS.)	1	
71	876-465	NYLON NUT M4	1	
72B	877-946	NOSE ASS'Y	1	INCLUD.92
73	877-143	MAIN NAIL STOPPER	1	
74	876-681	MAIN STOPPER SPRING	1	
75	877-148	SLEEVE	1	
76	877-141	HOLDER SPRING	1	
77	877-140	NAIL HOLDER	1	
78	875-249	THRUST WASHER	1	
79	949-453	SPRING WASHER M4 (10 PCS.)	2	
80	986-120	MACHINE SCREW (W/SP. WASHER) M4X40	1	
81	876-682	LOCK SHAFT	1	
82	949-776	ROLL PIN D3X10 (10 PCS.)	1	
83	877-374	GUIDE LOCK	1	
84	877-372	SPRING	1	
85	876-705	HEX. SOCKET SET SCREW M5X10	2	
86	877-136	FEED PISTON COVER	1	
87	877-137	GASKET (E)	1	
88	873-095	O - RING (P - 16)	1	
89	876-692	FEED PISTON	1	
90	877-144	FEED SPRING	1	
* 91	949-534	SPLIT PIN D2X15 (10 PCS.)	1	(TILL 10.1993 EXCEPT FOR USA,EUROPE)
* 91	877-826	FEEDER SHAFT RING	1	FOR USA,EUROPE
* 92	876-716	NAIL GUIDE SHAFT (A) ASS'Y	1	INCLUD.91 (FEEDER SHAFT RING)
93	876-679	SUB NAIL STOPPER	1	

\*: ALTERNATIVE PARTS

## PARTS

NV 50AA

ITEM NO.	CODE NO.	DESCRIPTION	NO. USED	REMARKS
94	876-685	SUB STOPPER SPRING	1	
95	877-134	NAIL GUIDE	1	
96	877-135	NAIL GUIDE COVER	1	
97	949-214	MACHINE SCREW M4X6 (10 PCS.)	2	
98	877-139	MAGAZINE ASS'Y	1	INCLUD.60 - 63,65 - 67,71,75 - 78,80
99	872-035	DUST CAP	1	FOR USA,EUROPE
101	877-942	HEAD CAP RUBBER	1	
103	878-181	NYLOCK HEX. SOCKET HD. BOLT M5X16	4	
104	878-184	WARNING LABEL	1	

## STANDARD ACCESSORIES

ITEM NO.	CODE NO.	DESCRIPTION	NO. USED	REMARKS
501A	875-769	EYE PROTECTOR	1	
* 502	877-153	PNEUMATIC TOOL LUBRICANT (30CC)	1	EXCEPT FOR USA
* 503	943-277	HEX. BAR WRENCH 3MM	1	FOR USA,EUROPE
* 504	944-458	HEX. BAR WRENCH 4MM	1	FOR USA,EUROPE
* 505	872-821	VALVE O - RING	1	FOR USA

## OPTIONAL ACCESSORIES

ITEM NO.	CODE NO.	DESCRIPTION	NO. USED	REMARKS
602	874-116	AIR SOCKET 6MM	1	
604	876-212	PNEUMATIC TOOL LUBRICANT (1L)	1	
605	876-720	DRIVE CONTROLLER	1	
606	944-458	HEX. BAR WRENCH 4MM	1	
607	943-277	HEX. BAR WRENCH 3MM	1	
608A	877-908	POWER SET	1	INCLUD.609 - 614,616
609	949-827	HEX. SOCKET HD. BOLT M5X65 (10 PCS.)	2	
610	949-826	HEX. SOCKET HD. BOLT M5X60 (10 PCS.)	4	
611	877-909	UPPER COVER	1	
612	877-911	GASKET (H)	1	
613	877-912	GASKET (J) W/4MM HOLE	2	FOR ROLL TYPE NAILER
614	877-910	EXHAUST PIECE	1	
615	876-762	SINGLE SHOT PARTS	1	
616	877-915	GASKET (J) W/O 4MM HOLE	2	FOR NON - ROLL TYPE NAILER

\*: ALTERNATIVE PARTS