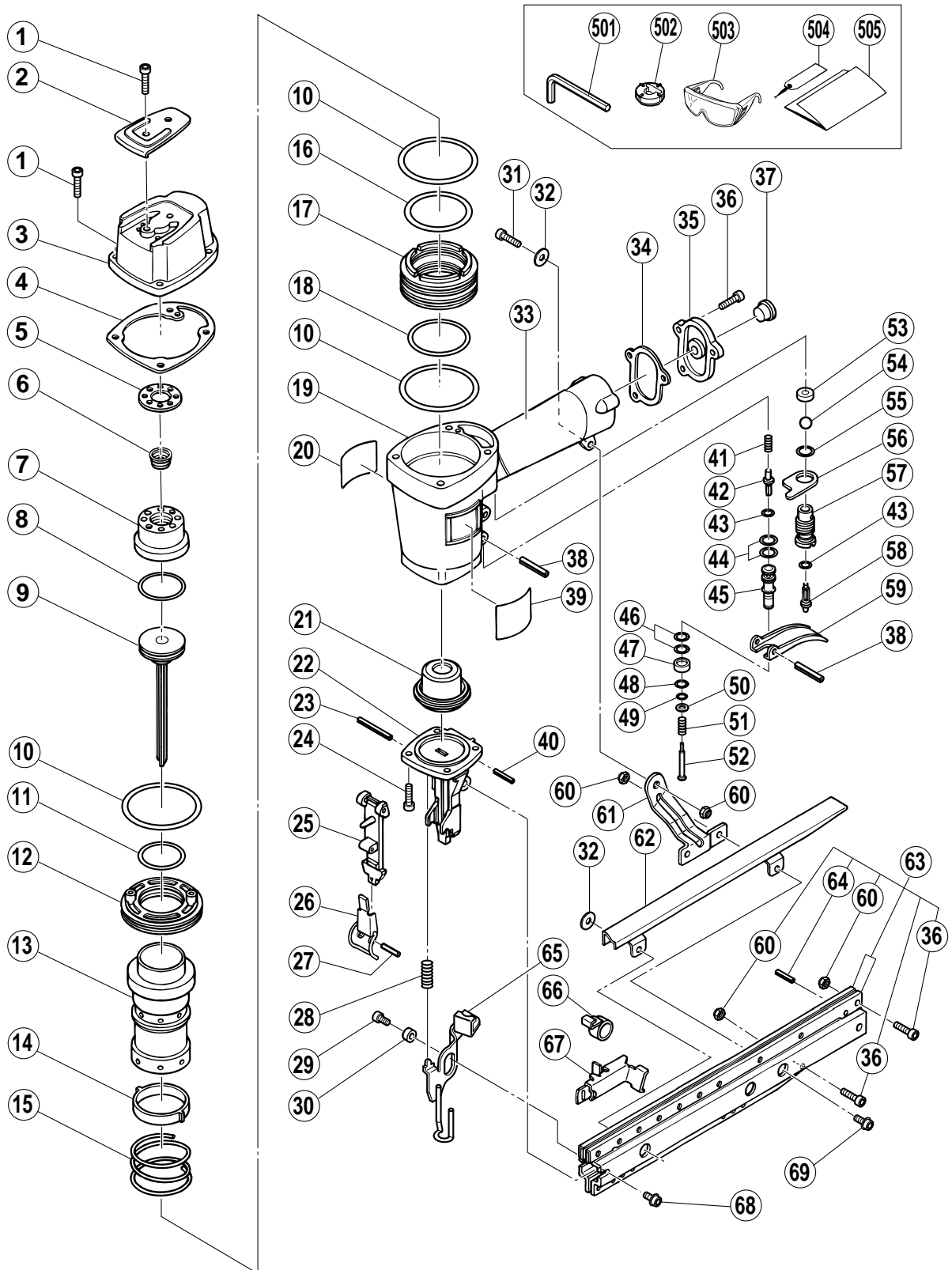


## PNEUMATIC TOOL PARTS LIST

**FINISH NAILER**  
**Model NT 65A3**

**2003 • 8 • 25**  
**(E1)**



**PARTS**

NT 65A3

| ITEM NO. | CODE NO. | DESCRIPTION                          | NO. USED | REMARKS                           |
|----------|----------|--------------------------------------|----------|-----------------------------------|
| 1        | 949-757  | HEX. SOCKET HD. BOLT M5X20 (10 PCS.) | 6        |                                   |
| 2        | 876-179  | TOP COVER                            | 1        |                                   |
| 3        | 877-917  | EXHAUST COVER                        | 1        |                                   |
| 4        | 876-176  | GASKET (B)                           | 1        |                                   |
| 5        | 876-178  | GASKET (C)                           | 1        |                                   |
| 6        | 884-173  | EXHAUST VALVE                        | 1        |                                   |
| 7        | 878-026  | HEAD CAP                             | 1        |                                   |
| 8        | 876-174  | PISTON O-RING                        | 1        |                                   |
| 9        | 882-402  | PISTON                               | 1        |                                   |
| 10       | 876-161  | O-RING (S-65)                        | 3        |                                   |
| 11       | 877-126  | CYLINDER O-RING (D)                  | 1        |                                   |
| 12       | 876-168  | CYLINDER PLATE                       | 1        |                                   |
| 13       | 884-172  | CYLINDER                             | 1        |                                   |
| 14       | 876-167  | CYLINDER RING                        | 1        |                                   |
| 15       | 884-179  | CYLINDER SPRING                      | 1        |                                   |
| 16       | 877-123  | CYLINDER O-RING (A)                  | 1        |                                   |
| 17       | 877-122  | CYLINDER GUIDE                       | 1        |                                   |
| 18       | 877-124  | CYLINDER O-RING (B)                  | 1        |                                   |
| 19       | 884-171  | BODY ASS'Y                           | 1        | INCLUD. 33                        |
| 20       | 878-184  | WARNING LABEL                        | 1        |                                   |
| 21       | 878-359  | PISTON BUMPER                        | 1        |                                   |
| 22       | 882-400  | NOSE ASS'Y                           | 1        | INCLUD. 40                        |
| 23       | 949-547  | ROLL PIN D4X36 (10 PCS.)             | 1        |                                   |
| 24       | 878-181  | NYLOCK HEX. SOCKET HD. BOLT M5X16    | 4        |                                   |
| 25       | 882-404  | GUIDE PLATE                          | 1        |                                   |
| 26       | 881-747  | LOCK LEVER                           | 1        |                                   |
| 27       | 949-685  | ROLL PIN D3X20 (10 PCS.)             | 1        |                                   |
| 28       | 877-873  | SPRING (B)                           | 1        |                                   |
| 29       | 880-830  | NYLOCK HEX. SOCKET HD. BOLT M5X12    | 1        |                                   |
| 30       | 882-403  | SLEEVE (A)                           | 1        |                                   |
| 31       | 949-658  | HEX. SOCKET HD. BOLT M5X18 (10 PCS.) | 1        |                                   |
| 32       | 876-205  | WASHER                               | 2        |                                   |
| 33       |          | GRIP RUBBER                          | 1        | (SUPPLIED WITH ITEM NO. 601, 602) |
| 34       | 877-131  | GASKET (D)                           | 1        |                                   |
| 35       | 880-036  | CAP                                  | 1        |                                   |
| 36       | 949-821  | HEX. SOCKET HD. BOLT M5X16 (10 PCS.) | 5        |                                   |
| 37       | 872-035  | DUST CAP                             | 1        |                                   |
| 38       | 949-866  | ROLL PIN D3X30 (10 PCS.)             | 2        |                                   |
| 39       |          | NAME PLATE                           | 1        |                                   |
| 40       | 949-540  | ROLL PIN D2.5X20 (10 PCS.)           | 1        |                                   |
| 41       | 875-643  | PLUNGER SPRING                       | 1        |                                   |
| 42       | 878-155  | PLUNGER (A)                          | 1        |                                   |
| 43       | 874-820  | PLUNGER O-RING                       | 2        |                                   |
| 44       | 884-112  | O-RING (I.D 10.7)                    | 2        |                                   |
| 45       | 884-174  | VALVE BUSHING                        | 1        |                                   |
| 46       | 872-645  | O-RING (P-9)                         | 2        |                                   |
| 47       | 884-177  | VALVE SLEEVE                         | 1        |                                   |
| 48       | 876-316  | O-RING (S-7)                         | 1        |                                   |
| 49       | 878-723  | PLUNGER O-RING                       | 1        |                                   |
| 50       | 949-424  | WASHER M5 (10 PCS.)                  | 1        |                                   |
| 51       | 884-176  | PLUNGER (B) SPRING                   | 1        |                                   |



**STANDARD ACCESSORIES**

NT 65A3

| ITEM NO. | CODE NO. | DESCRIPTION         | NO. USED | REMARKS |  |
|----------|----------|---------------------|----------|---------|--|
| 501      | 944-458  | HEX. BAR WRENCH 4MM | 1        |         |  |
| 502      | 881-751  | NOSE CAP (A)        | 1        |         |  |
| 503      | 875-769  | SAFETY GLASSES      | 1        |         |  |
| 504      | 884-180  | CAUTION TAG         | 1        |         |  |
| 505      | 884-120  | LEAFLET             | 1        |         |  |
|          |          |                     |          |         |  |
|          |          |                     |          |         |  |
|          |          |                     |          |         |  |
|          |          |                     |          |         |  |
|          |          |                     |          |         |  |
|          |          |                     |          |         |  |
|          |          |                     |          |         |  |
|          |          |                     |          |         |  |
|          |          |                     |          |         |  |
|          |          |                     |          |         |  |
|          |          |                     |          |         |  |

**OPTIONAL ACCESSORIES**

| ITEM NO. | CODE NO. | DESCRIPTION                      | NO. USED | REMARKS |  |
|----------|----------|----------------------------------|----------|---------|--|
| 601      | 881-768  | GRIP TAPE (A)                    | 1        |         |  |
| 602      | 880-407  | TAPE                             | 2        |         |  |
| 603      | 877-153  | PNEUMATIC TOOL LUBRICANT (30CC)  | 1        |         |  |
| 604      | 874-042  | PNEUMATIC TOOL LUBRICANT (120CC) | 1        |         |  |
| 605      | 876-212  | PNEUMATIC TOOL LUBRICANT (1L)    | 1        |         |  |
| 606      | 317-918  | GREASE (ATTOLUB NO.2) 500G       | 1        |         |  |
|          |          |                                  |          |         |  |
|          |          |                                  |          |         |  |
|          |          |                                  |          |         |  |
|          |          |                                  |          |         |  |
|          |          |                                  |          |         |  |
|          |          |                                  |          |         |  |
|          |          |                                  |          |         |  |
|          |          |                                  |          |         |  |
|          |          |                                  |          |         |  |
|          |          |                                  |          |         |  |
|          |          |                                  |          |         |  |
|          |          |                                  |          |         |  |
|          |          |                                  |          |         |  |
|          |          |                                  |          |         |  |
|          |          |                                  |          |         |  |
|          |          |                                  |          |         |  |
|          |          |                                  |          |         |  |
|          |          |                                  |          |         |  |
|          |          |                                  |          |         |  |
|          |          |                                  |          |         |  |
|          |          |                                  |          |         |  |
|          |          |                                  |          |         |  |
|          |          |                                  |          |         |  |