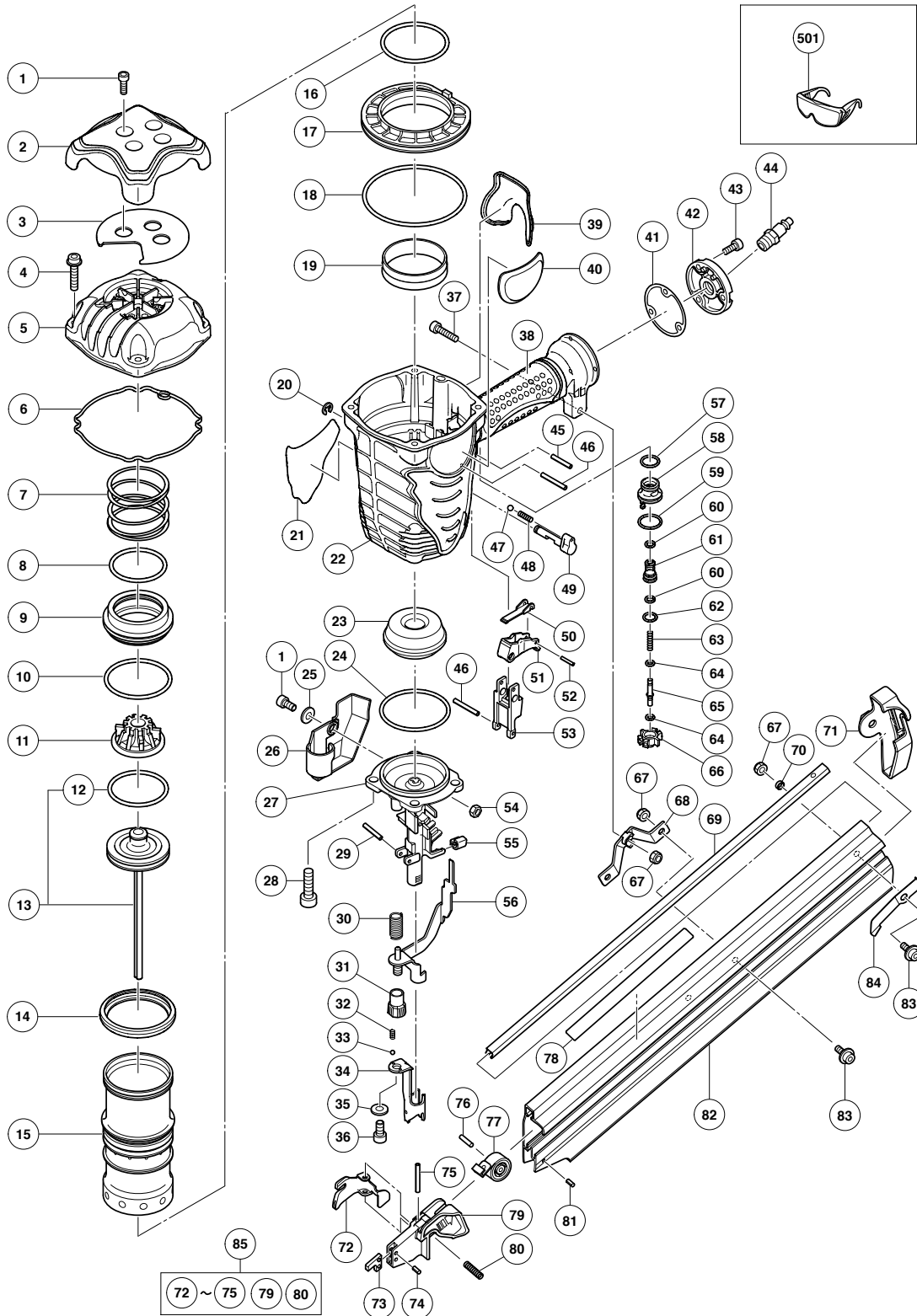


## PNEUMATIC TOOL PARTS LIST

**STRIP NAILER**  
**Model NR 90AF**

2007 · 10 · 22

(E1)



**PARTS**

NR 90AF

ITEM NO.	CODE NO.	DESCRIPTION	NO. USED	REMARKS
1	949-665	HEX. SOCKET HD. BOLT M5X14 (10 PCS.)	5	
2	884-952	HEAD GUARD	1	
3	884-986	SHEET	1	
4	878-877	HEX. SOCKET HD. BOLT (W/FLANGE) M6X30	4	
5	886-261	EXHAUST COVER	1	
6	884-953	GASKET (A)	1	
7	884-949	HEAD VALVE SPRING	1	
8	884-947	O-RING (I.D 49.4)	1	
9	884-946	HEAD VALVE	1	
10	884-948	O-RING (I.D 59.4)	1	
11	884-950	EXHAUST VALVE RUBBER	1	
12	884-958	PISTON O-RING	1	
13	886-262	PISTON ASS'Y	1	INCLUD. 12
14	884-945	VALVE RUBBER	1	
15	884-941	CYLINDER	1	
16	884-942	O-RING (I.D 59.6)	1	
17	884-944	CYLINDER PLATE	1	
18	884-943	O-RING (I.D 94.6)	1	
19	877-317	CYLINDER RING	1	
20	955-479	RETAINING RING (E-TYPE) FOR D6 SHAFT	1	
21		NAME PLATE	1	
22	886-259	BODY ASS'Y	1	INCLUD. 38, 39
23	884-959	PISTON BUMPER	1	
24	884-989	O-RING (I.D 60)	1	
25	876-205	WASHER	1	
26	886-269	PUSHING LEVER COVER	1	
27	886-264	NOSE	1	
28	306-437	NYLOCK HEX. SOCKET HD. BOLT M8X30	4	
29	949-518	ROLL PIN D3X18 (10 PCS.)	1	
30	886-263	PUSHING LEVER SPRING	1	
31	326-799	ADJUSTER	1	
32	886-281	ADJUSTER SPRING	2	
33	959-148	STEEL BALL D3.175 (10 PCS.)	2	
34	886-267	PUSHING LEVER (A)	1	
35	886-282	WASHER	1	
36	949-657	HEX. SOCKET HD. BOLT M6X12 (10 PCS.)	1	
37	949-670	HEX. SOCKET HD. BOLT M6X22 (10 PCS.)	1	
38		GRIP RUBBER (A)	1	SUPPLIED WITH ITEM NO. 601, 602
39		GRIP RUBBER (B)	1	
40	886-356	HITACHI PLATE	1	
41	884-342	GASKET (B)	1	
42	881-949	CAP	1	
43	949-821	HEX. SOCKET HD. BOLT M5X16 (10 PCS.)	3	
44		AIR PLUG NPT 3/8	1	
45	949-539	ROLL PIN D3X25 (10 PCS.)	1	
46	884-975	ROLL PIN D3X32	2	
47	959-155	STEEL BALL D3.97 (10 PCS.)	1	
48	982-454	SPRING (C)	1	
49	886-265	CHANGE KNOB (C)	1	
50	885-689	TRIGGER ARM (C)	1	
51	885-657	TRIGGER (C) ASS'Y	1	INCLUD. 50, 52

**PARTS**

NR 90AF

ITEM NO.	CODE NO.	DESCRIPTION	NO. USED	REMARKS
52	881-951	ROLL PIN D2.5X16	1	
53	886-266	PUSHING LEVER GUIDE	1	
54	877-371	NYLON NUT M5	1	
55	884-985	NOSE RUBBER	2	
56	886-268	PUSHING LEVER (B)	1	
57	877-763	FEED PISTON O-RING (I.D.14)	1	
58	884-963	VALVE BUSHING (B)	1	
59	873-570	O-RING (P-18)	1	
60	676-531	O-RING (P-7)	2	
61	884-964	VALVE PISTON	1	
62	872-654	O-RING (1AP-10)	1	
63	884-966	PLUNGER SPRING	1	
64	878-888	O-RING (I.D 1.8)	2	
65	884-965	PLUNGER	1	
66	884-962	VALVE BUSHING (A)	1	
67	963-837	NYLON NUT M6	4	
68	886-279	HANDLE ARM	1	
69	886-271	NAIL RAIL	1	
70	886-273	SLEEVE	1	
71	886-272	MAGAZINE COVER	1	
72	886-275	NAIL FEEDER (A)	1	
73	886-277	STOPPER	1	
74	949-776	ROLL PIN D3X10 (10 PCS.)	2	
75	949-682	ROLL PIN D4X32 (10 PCS.)	1	
76	943-364	NEEDLE ROLLER D4X20	1	
77	883-503	RIBBON SPRING	1	
78		LABEL (C)	1	
79	886-276	NAIL FEEDER (B)	1	
80	886-278	FEEDER SPRING	1	
81	949-749	ROLL PIN D3X8 (10 PCS.)	1	
82	886-270	MAGAZINE	1	
83	984-443	HEX. SOCKET HD. BOLT (W/FLANGE) M6X12	3	
84	886-280	NAIL STOPPER	1	
85	886-274	NAIL FEEDER ASS'Y	1	INCLUD. 72-75, 79, 80

**STANDARD ACCESSORIES**

NR 90AF

ITEM NO.	CODE NO.	DESCRIPTION	NO. USED	REMARKS
501	875-769	SAFETY GLASSES	1	

**OPTIONAL ACCESSORIES**

ITEM NO.	CODE NO.	DESCRIPTION	NO. USED	REMARKS
601	881-768	GRIP TAPE (A)	1	
602	880-407	TAPE	2	
603	877-153	PNEUMATIC TOOL LUBRICANT (30CC)	1	
604	874-042	PNEUMATIC TOOL LUBRICANT (120CC)	1	
605	876-212	PNEUMATIC TOOL LUBRICANT (1L)	1	
606	317-918	GREASE (ATTOLUB NO. 2) 500G	1	
607	18020	O-RING KIT	1	INCLUD. 608-615
608	884-953	GASKET (A)	1	
609	884-947	O-RING (I.D 49.4)	1	
610	884-948	O-RING (I.D 59.4)	1	
611	884-958	PISTON O-RING	1	
612	884-942	O-RING (I.D 59.6)	1	
613	877-317	CYLINDER RING	1	
614	884-943	O-RING (I.D 94.6)	1	
615		INSTRUCTION MANUAL	1	
616	886-283	FULL SEQUENTIAL ACTUATION MECHANISM KIT	1	INCLUD. 617-619
617	886-357	TRIGGER (D)	1	
618	884-994	TRIGGER ARM SPRING	1	
619	949-518	ROLL PIN D3X18 (10 PCS.)	1	
620	886-401	NOSE CAP (A)	1	