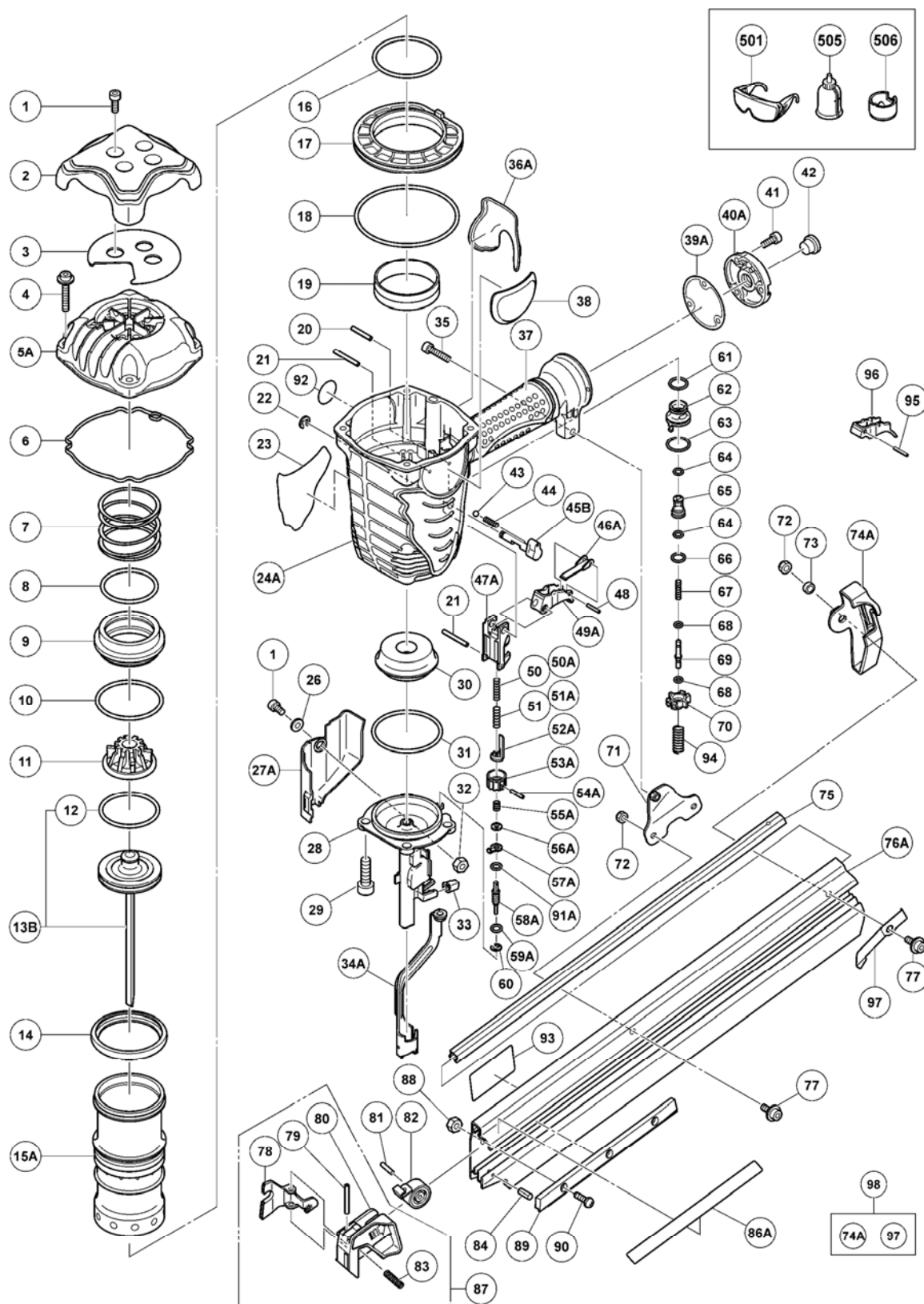


PNEUMATIC TOOL PARTS LIST

■ STRIP NAILER
Model NR90AE (PR)

2010 • 06 • 16
(E1)



PARTS

NR90AE (PR)

ITEM NO.	CODE NO.	DESCRIPTION	NO. USED	REMARKS
1	949665	HEX. SOCKET HD. BOLT M5X14 (10 PCS.)	5	
2	884952	HEAD GUARD	1	
3	884986	SHEET	1	
4	878877	HEX. SOCKET HD. BOLT (W/FLANGE) M6X30	4	
5A	886261	EXHAUST COVER	1	
6	884953	GASKET (A)	1	
7	884949	HEAD VALVE SPRING	1	
8	884947	O-RING (I.D 49.4)	1	
9	884946	HEAD VALVE	1	
10	884948	O-RING (I.D 59.4)	1	
11	884950	EXHAUST VALVE RUBBER	1	
12	884958	PISTON O-RING	1	
13B	887491	PISTON ASS'Y	1	INCLUD.12
14	884945	VALVE RUBBER	1	
15A	884941	CYLINDER	1	
16	884942	O-RING (I.D 59.6)	1	
17	884944	CYLINDER PLATE	1	
18	884943	O-RING (I.D 94.6)	1	
19	877317	CYLINDER RING	1	
20	949539	ROLL PIN D3X25 (10 PCS.)	1	
21	884975	ROLL PIN D3X32	2	
22	955479	RETAINING RING (E-TYPE) FOR D6 SHAFT	1	
23		NAME PLATE	1	
24A	886259	BODY ASS'Y	1	INCLUD.36.37
26	876205	WASHER	1	
27A	886874	PUSH LEVER COVER (A)	1	
28	885521	NOSE	1	
29	306437	NYLOCK HEX. SOCKET HD. BOLT M8X30	4	
30	884959	PISTON BUMPER	1	
31	884989	O-RING (I.D 60)	1	
32	877371	NYLON NUT M5	1	
33	884985	NOSE RUBBER	2	
34A	886865	PUSHING LEVER (A) ASS'Y	1	
35	949670	HEX. SOCKET HD. BOLT M6X22 (10 PCS.)	1	
36A	886260	GRIP RUBBER (B)	1	
37		GRIP RUBBER (A)	1	SEE ITEM NO. 601 & 602
38		HITACHI LABEL	1	
39A	884342	GASKET (B)	1	
40A	881949	CAP	1	
41	949821	HEX. SOCKET HD. BOLT M5X16 (10 PCS.)	3	
42	872035	DUST CAP	1	
43	959155	STEEL BALL D3.97 (10 PCS.)	1	
44	982454	SPRING (C)	1	
45B	886265	CHANGE KNOB (C)	1	
46A	885689	TRIGGER ARM (C)	1	
*47	884995	PUSH LEVER GUIDE(B)	1	FOR NORTH EUROPE
47A	886864	PUSHING LEVER GUIDE	1	
48	881951	ROLL PIN D2.5X16	1	
49A	885657	TRIGGER (C) ASS'Y	1	INCLUD.46A.48
*50	884399	PUSHING LEVER SPRING (D)	1	FOR EUROPE
50A	886861	PUSH LEVER SPRING (B)	1	
*51	884398	PUSHING LEVER SPRING (C)	1	FOR EUROPE
51A	886860	PUSH LEVER SPRING (A)	1	
52A	886867	PUSH LEVER (C)	1	
53A	886872	ADJUSTER	1	
54A	886873	ROLL PIN D2X16	1	
55A	886870	ADJUSTER SPRING	1	
56A	886869	ADJUSTER PLATE (C)	1	

