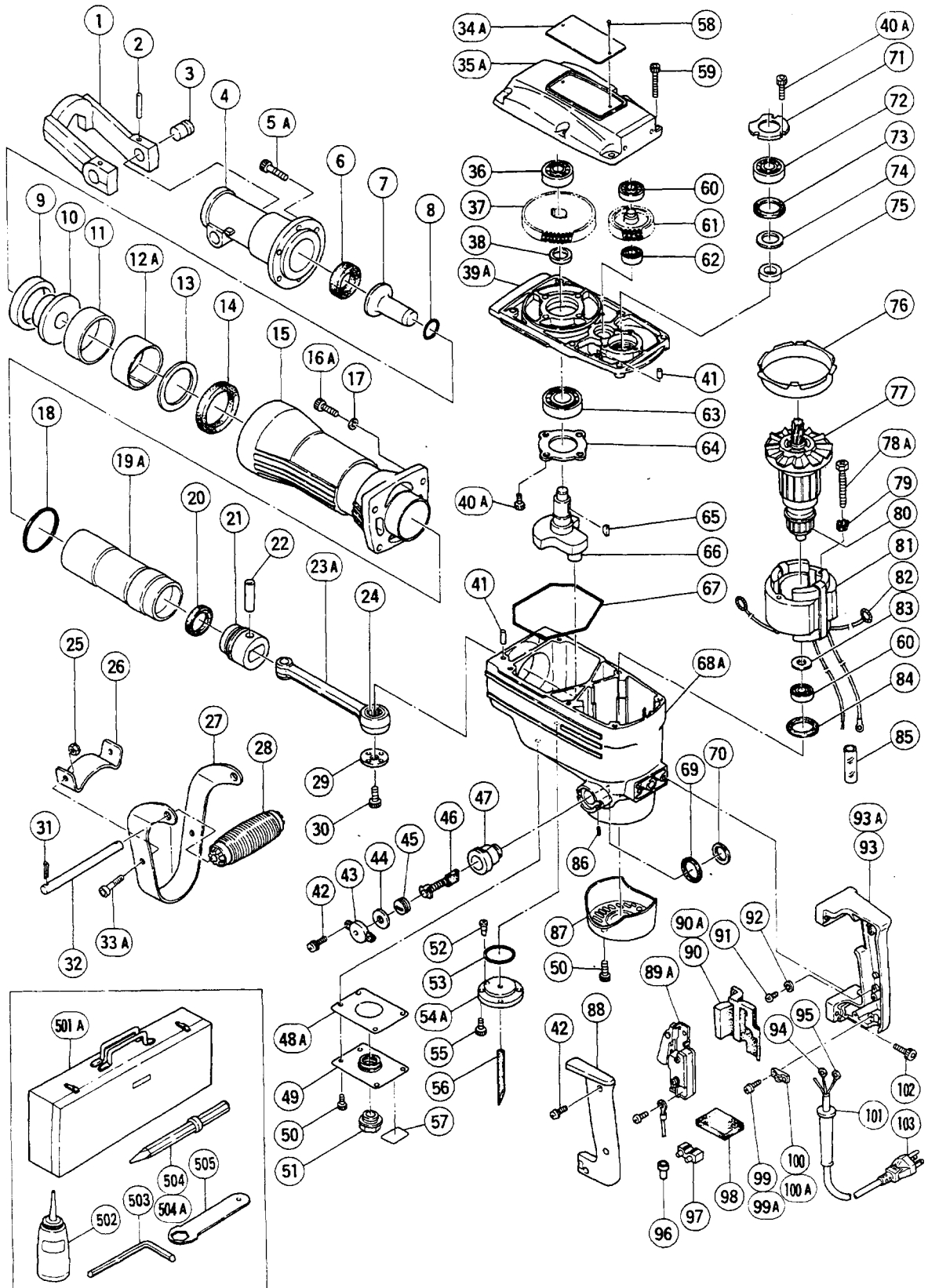


ELECTRIC TOOL PARTS LIST

■HAMMER
Model H 65

1996 • 5 • 20
(E3)



PARTS

H 65

ITEM NO.	CODE NO.	DESCRIPTION	NO. USED	REMARKS
1	985-225	RETAINER	1	
2	949-874	ROLL PIN D6X36 (10 PCS.)	2	
3	985-224	LEVER PIN	2	
4	996-368	FRONT COVER	1	
5A	306-437	NYLOCK HEX. SOCKET HD. BOLT M8X30	6	
6	996-369	DAMPER (B)	1	
7	996-367	SECOND HAMMER	1	
8	944-936	O - RING	1	
9	956-965	DAMPER	1	
10	956-964	SHANK SLEEVE	1	
11	956-962	MOUTH COVER	1	
12A	956-963	MOUTH	1	
13	956-961	MOUTH WASHER	1	
14	956-960	URETHANE RING	1	
15	956-959	CYLINDER CASE (SILVER GREEN)	1	
16A	306-163	NYLOCK HEX. SOCKET HD. BOLT M8X35	4	
17	949-433	BOLT WASHER M8 (10 PCS.)	4	
18	956-996	O - RING (1AS - 60)	1	
19A	956-958	STRIKER	1	
20	944-927	L - RING	1	
21	956-957	PISTON	1	
22	944-928	PISTON PIN	1	
23A	998-434	CONNECTING ROD ASS'Y	1	INCLUD.24
24	944-921	NEEDLE BEARING (NTN 8E - NK 18/20 RDO)	1	
25	944-950	U - NUT (B) M8	2	
26	944-948	HANDLE STAY	1	
27	956-852	SIDE HANDLE ASS'Y	1	INCLUD.25,26,28,31 - 33A
28	944-951	GRIP	1	
29	956-955	CRANK WASHER	1	
30	996-364	SEAL LOCK HEX. SOCKET HD. BOLT M8X16	1	
31	949-895	SPLIT PIN D4X25 (10 PCS.)	2	
32	944-952	HANDLE SHAFT	1	
33A	949-655	HEX. SOCKET HD. BOLT M8X16 (10 PCS.)	2	
34A		NAME PLATE	1	
35A	956-952	GEAR COVER (SILVER GREEN)	1	
36	630-2VV	BALL BEARING 6302VVCMP2S	1	
37	944-916	FINAL GEAR	1	
38	944-915	DISTANCE RING (B)	1	
39A	998-412	INNER COVER	1	
40A	990-079	SEAL LOCK HEX. SOCKET HD. BOLT M5X16	7	
41	944-918	PIN D5X15.8	2	
42	951-039	MACHINE SCREW (W/SP. WASHER) M4X12	7	
43	956-972	CAP COVER	2	
44	944-960	CAP RUBBER	2	
45	940-540	BRUSH CAP	2	
46	999-044	CARBON BRUSH (1 PAIR)	2	
47	956-984	BRUSH HOLDER	2	
48A	956-971	COVER SEAL	1	
49	956-970	COVER PLATE	1	
50	991-690	SEAL LOCK HEX. SOCKET HD. BOLT M5X12	6	
51	955-011	OIL GAUGE	1	

*: ALTERNATIVE PARTS

5 - 96

PARTS

H 65

ITEM NO.	CODE NO.	DESCRIPTION	NO. USED	REMARKS
52	995-396	VALVE	1	
53	996-363	O - RING (S - 40)	1	
54A	996-362	FELT HOLDER	1	
55	983-162	SEAL LOCK HEX. SOCKET HD. BOLT M4X12	4	
56	956-967	OIL FELT	1	
57	955-008C	CAUTION PLATE (ENGLISH)	1	
58	949-510	RIVET D2.5X4.8 (10 PCS.)	2	
59	986-940	SEAL LOCK HEX. SOCKET HD. BOLT M6X45	6	
60	620-1VV	BALL BEARING 6201VVCMP2S	2	
61	956-948	COUNTER GEAR	1	
62	600-1VV	BALL BEARING 6001VVCMP2L	1	
63	620-5DD	BALL BEARING 6205DDUCMP2S	1	
64	956-949	BEARING COVER	1	
65	956-850	WOODRUFF KEY 4X16	2	
66	957-142	CRANK SHAFT	1	
67	957-143	SEAL RING (A)	1	
68A	996-376	HOUSING ASS'Y	1	INCLUD.47,86
69	956-943	RUBBER WASHER	2	
70	956-683	STOP PLATE	2	
71	944-911	BEARING COVER (A)	1	
72	620-3VV	BALL BEARING 6203VVCMP2S	1	
73	944-910	URETHANE WASHER (A) M40	1	TILL 10.1993
74	944-908	FELT PACKING	1	TILL 10.1993
75	944-907	DISTANCE RING (A)	1	
76	956-944	FAN GUIDE	1	
77	998-370	FAN	1	
78A	998-411	SEAL LOCK SCREW (W/SP. WASHER) M5X60	2	
79	956-764	SPECIAL WASHER	2	TILL 5.1987
80	360-068U	ARMATURE ASS'Y 110V - 115V	1	INCLUD.60,72,77,83
81	340-011C	STATOR ASS'Y 115V	1	INCLUD.82
82	945-932	BRUSH TERMINAL	2	
83	944-954	BEARING WASHER	1	
84	944-904	URETHANE WASHER (A) M32	1	TILL 10.1993
85		VINYL TUBE (I.D.7XT0.5X50)	1	
86	938-477	HEX. SOCKET SET SCREW M5X8	2	
87	956-977	TAIL COVER	1	
* 88	956-980	HANDLE COVER (SILVER GREEN)	1	FOR USA
* 88	957-141	HANDLE COVER (B)	1	FOR CAN
* 89A	992-891	SWITCH (A) (1P SCREW TYPE) W/O LOCK	1	FOR USA
* 89A	995-398	SWITCH (A) (1P SCREW TYPE) W/LOCK	1	FOR CAN
90	971-133	SUPPORT (C)	1	TILL 3.1987
90A	971-163	SUPPORT (D)	1	SINCE 4.1987
91	949-292	MACHINE SCREW (BRASS) M4X6 (10 PCS.)	1	
92	949-453	SPRING WASHER M4 (10 PCS.)	1	
* 93	957-140	HANDLE (B)	1	FOR CAN
* 93A	957-146	HANDLE ASS'Y (SILVER GREEN)	1	INCLUD.99A,100A FOR USA
94	930-804	TERMINAL M4.0 (10 PCS.)	1	
95	959-144	TERMINAL 50051 (10 PCS.)	1	
* 96	959-141	CONNECTOR 50092 (10 PCS.)	1	FOR CAN
* 97	938-307	PILLAR TERMINAL	1	FOR USA
* 98	963-243	SUPPORT	1	FOR USA

*: ALTERNATIVE PARTS

