

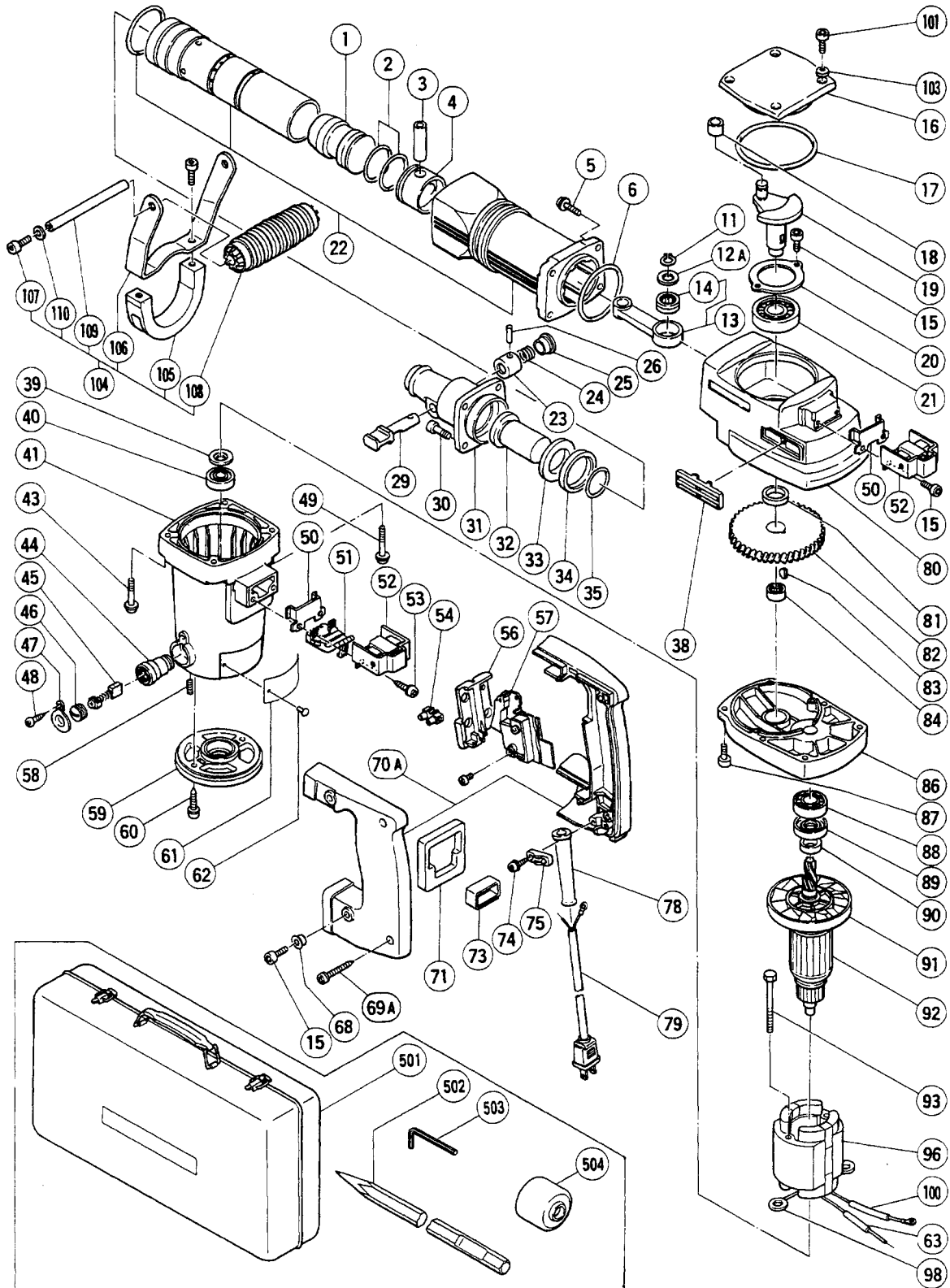
HITACHI

LIST NO. E417

ELECTRIC TOOL PARTS LIST

■ **HAMMER**
Model H 55SC

1994 • 6 • 3
(E2)



PARTS

H 55SC

ITEM NO.	CODE NO.	DESCRIPTION	NO. USED	REMARKS
1	985-455	STRIKER	1	
2	985-454	O - RING (A) (FPM810)	2	
3	985-451	PISTON PIN	1	
4	985-452	PISTON	1	
5	990-083	HEX. SOCKET HD. BOLT (W/FLANGE) M8X35	4	
6	956-996	O - RING (1AS - 60)	1	
11	939-542	RETAINING RING FOR D12 SHAFT (10 PCS.)	1	
12A	985-453	CRANK WASHER	1	
13	985-450	CONNECTING ROD ASS'Y	1	INCLUD.14
14	985-470	NEEDLE BEARING (B) (RNA4901V1)	1	
15	984-509	SEAL LOCK HEX. SOCKET HD. BOLT M5X14	8	
16	986-957	CRANK COVER	1	
17	877-316	O - RING (S - 90)	1	
18	985-467	INNER RACE	1	
19	985-444	CRANK SHAFT	1	
20	985-443	BEARING COVER	1	
21	620-4DD	BALL BEARING 6204DDUCMPS2S	1	
22	986-941	CYLINDER CASE	1	
23	993-241	SPRING CASE	1	
24	302-096	STOPPER SPRING	1	
25	993-243	STOPPER SLEEVE	1	
26	943-384	NEEDLE ROLLER D4X20	1	
29	302-095	STOP LEVER	1	
30	985-479	SEAL LOCK HEX. SOCKET HD. BOLT M8X25	4	
31	302-120	FRONT COVER	1	
32	302-094	SECOND HAMMER	1	
33	986-943	DAMPER WASHER	1	
34	986-942	DAMPER	1	
35	986-946	O - RING (C) (FPM810)	1	
38	991-713	WIND GUIDE (B)	2	
39	985-436	DUST WASHER	1	
40	620-0VV	BALL BEARING 6200VVCMP2S	1	
41	985-435	HOUSING ASS'Y	1	INCLUD.44,58
43	994-085	HEX. SOCKET HD. BOLT (W/FLANGE) M6X60	2	
44	983-382	BRUSH HOLDER	2	
45	981-946Z	CARBON BRUSH (AUTO STOP TYPE) (1 PAIR)	2	
46	981-781	BRUSH CAP	2	
47	981-959	CAP COVER	2	
48	302-090	TAPPING SCREW D4X10 (BLACK)	2	
49	994-084	HEX. SOCKET HD. BOLT (W/FLANGE) M6X40	2	
50	980-750	GUIDE PLATE	2	
51	985-469	INTERNAL WIRE HOLDER	1	
52	980-727	HANDLE RUBBER	2	
53	985-605	TAPPING SCREW (W/WASHER) D5X25	2	
54	938-307Z	PILLAR TERMINAL	1	
56	990-082	SUPPORT (E)	1	
57	992-891	SWITCH (A) (1P SCREW TYPE) W/O LOCK	1	
58	938-477	HEX. SOCKET SET SCREW M5X8	2	
59	985-437	TAIL COVER	1	
60	302-089	TAPPING SCREW (W/FLANGE) D5X20 (BLACK)	2	
61		NAME PLATE	1	

*: ALTERNATIVE PARTS

