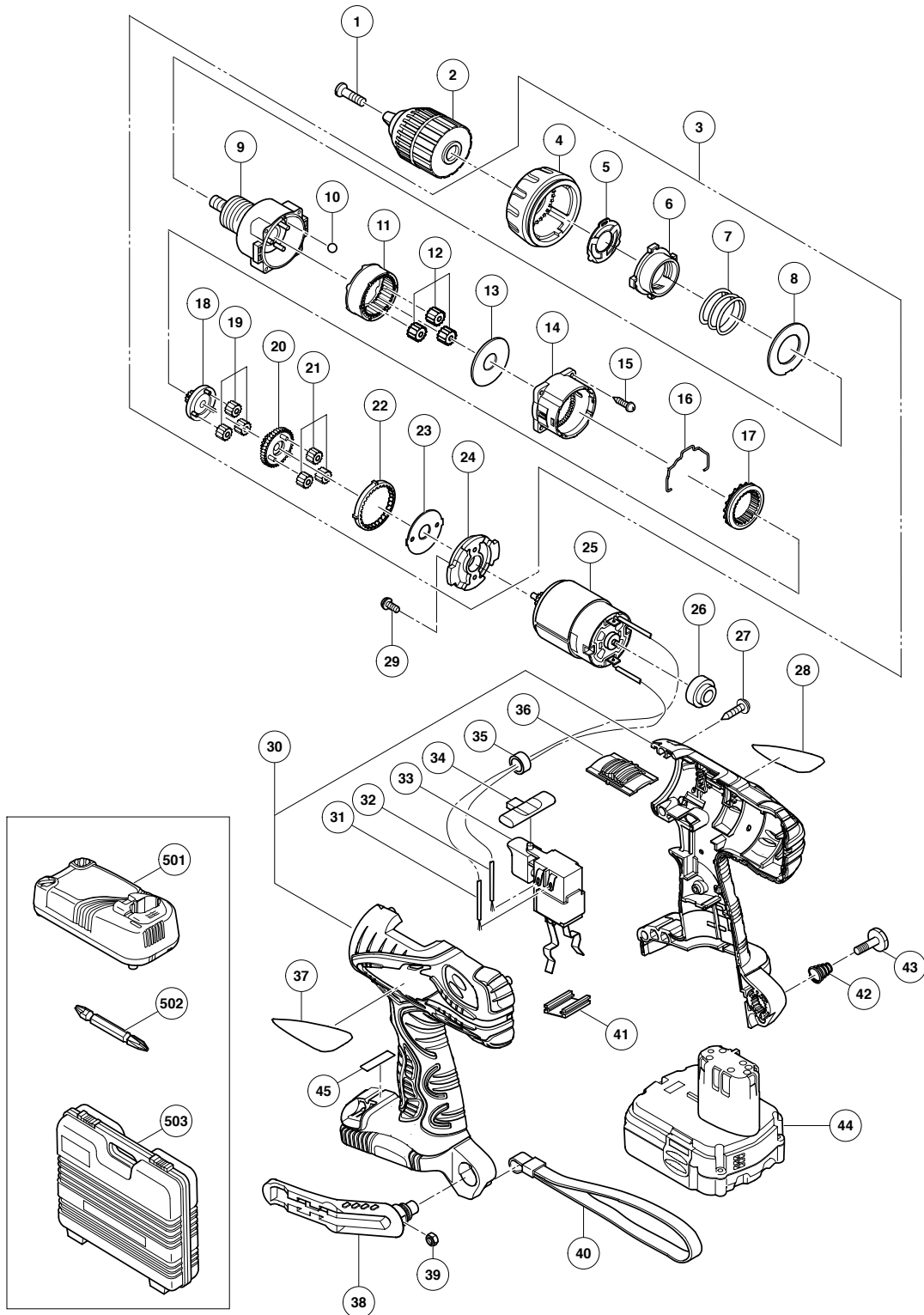


ELECTRIC TOOL PARTS LIST

CORDLESS DRIVER DRILL
Model DS 14DFL

2007 · 4 · 27

(E1)



PARTS

DS 14DFL

ITEM NO.	CODE NO.	DESCRIPTION	NO. USED	REMARKS	
*	1	324-503	SPECIAL SCREW (LEFT HAND) (B) M6X23	1	
*	1	311-959	SPECIAL SCREW (LEFT HAND) M6X23	1	
*	2	322-167	DRILL CHUCK 10VLRf-N (W/O CHUCK WRENCH)	1	
*	2	324-205	DRILL CHUCK 13VLRm-N (W/O CHUCK WRENCH)	1	
	3	324-490	GEAR BOX ASS'Y	1	INCLUD. 4-24
	4	324-114	CLUTCH DIAL	1	
	5	324-108	CLICK SPRING	1	
	6	324-109	NUT	1	
	7	324-110	SPRING	1	
	8	324-347	WASHER (D)	1	
	9	324-491	FRONT CASE	1	
	10	306-936	STEEL BALL D5	6	
	11	324-111	RING GEAR	1	
	12	324-348	PLANET GEAR (C) SET (3 PCS.)	3	
	13	324-349	WASHER (A)	1	
	14	324-501	REAR CASE	1	
	15	324-357	SCREW SET D3X12 (4 PCS.)	4	
	16	324-115	SHIFT ARM	1	
	17	324-351	SLIDE RING GEAR	1	
	18	324-112	PINION (C)	1	
	19	324-352	PLANET GEAR (B) SET (3 PCS.)	3	
	20	324-492	PINION (B)	1	
	21	324-494	PLANET GEAR (A) SET (3 PCS.)	3	
	22	324-493	FIRST RING GEAR	1	
	23	324-355	WASHER (B)	1	
	24	324-495	MOTOR SPACER	1	
	25	324-483	MOTOR	1	
	26	324-485	SPACER	1	
	27	313-687	TAPPING SCREW (W/FLANGE) D3X16 (BLACK)	8	
	28		NAME PLATE	1	
	29	317-333	MACHINE SCREW (W/SP. WASHER) M4X6	2	
*	30	324-482	HOUSING (A).(B) SET	1	
*	30	328-498	HOUSING (A).(B) SET	1	FOR USA, CAN
	31	324-484	INTERNAL WIRE (BLACK) 90L	1	
	32	324-499	INTERNAL WIRE (RED) 140L	1	
	33	324-498	DC-SPEED CONTROL SWITCH	1	
	34	324-117	PUSHING BUTTON	1	
*	35	323-229	FERRITE CORE	1	EXCEPT FOR NZL, AUS, USA, CAN
	36	324-116	SHIFT KNOB	1	
	37		HITACHI LABEL	1	
	38	320-287	HOOK ASS'Y	1	INCLUD. 39
	39	320-288	V-LOCK NUT M5	1	
*	40	306-952	STRAP (BLACK)	1	EXCEPT FOR USA, CAN
	41	315-141	TERMINAL SUPPORT (A)	1	
	42	319-926	HOOK SPRING	1	
	43	320-881	SPECIAL SCREW (A) M5	1	
*	44	327-729	BATTERY BCL 1415 (EUROPE, AUS, NZL)	1	
*	44	327-728	BATTERY BCL 1415 (USA, CAN)	1	
*	45		CAUTION PLATE	1	FOR USA, CAN

ITEM NO.	CODE NO.	DESCRIPTION	NO. USED	REMARKS	