

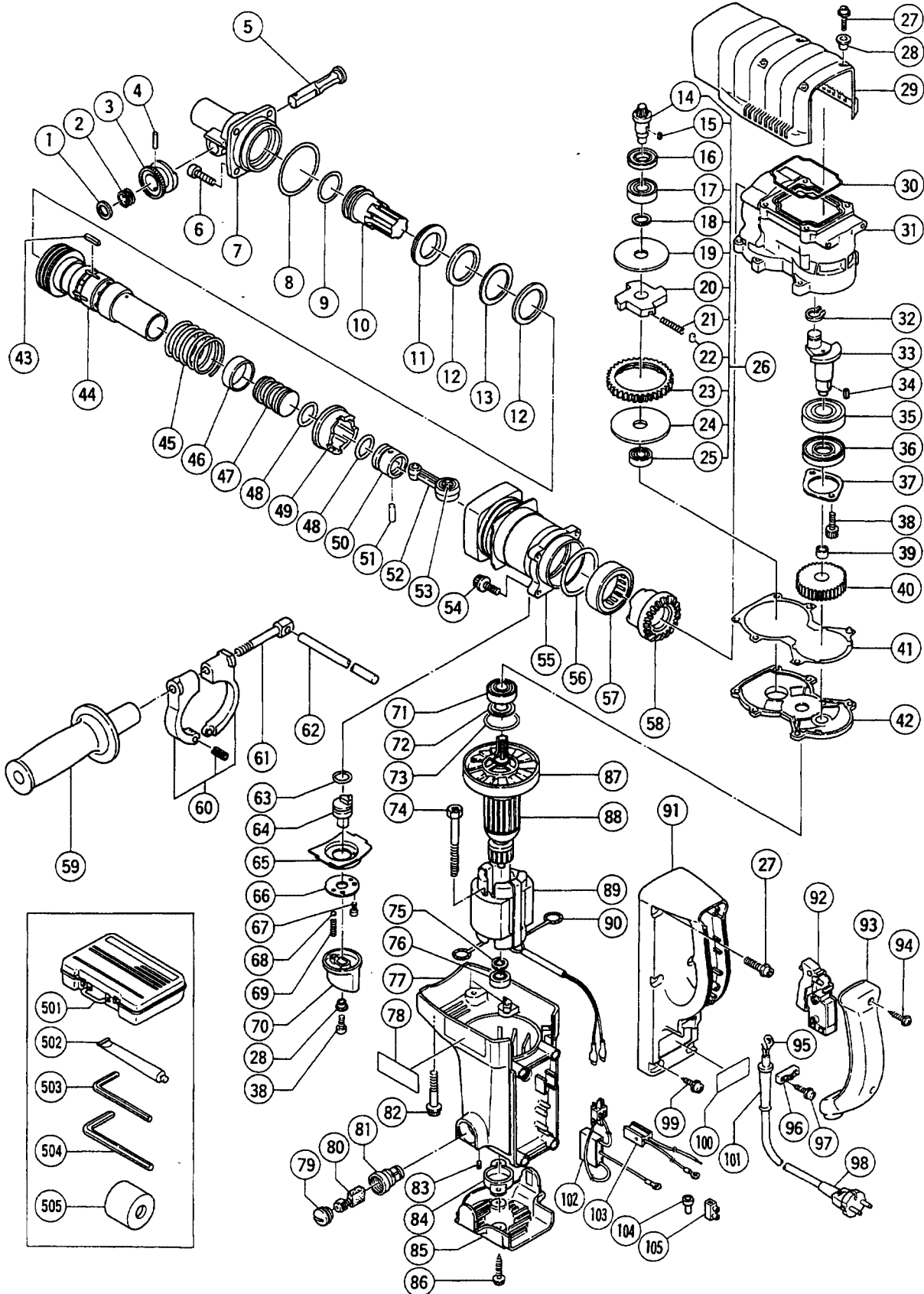
# HITACHI

LIST NO. E435

## ELECTRIC TOOL PARTS LIST

■ HAMMER DRILL  
Model DH 40FA

1997 · 2 · 20  
(E1)



## PARTS

DH 40FA

ITEM NO.	CODE NO.	DESCRIPTION	NO. USED	REMARKS
1	983-242	STOP WASHER	1	
2	981-937	STOPPER SPRING	1	
3	983-241	KNOB (A)	1	
4	943-364	NEEDLE ROLLER D4X20	1	
5	313-936	STOP LEVER	1	
6	993-040	NYLOCK HIGH TENSION BOLT M7X25	4	
7	313-935	FRONT COVER	1	
8	956-996	O - RING (1AS - 60)	1	
9	986-882	O - RING	1	
10	303-339	SECOND HAMMER	1	
11	993-235	DAMPER WASHER	1	
12	993-234	DAMPER	2	
13	993-233	WASHER	1	
14	313-052	BEVEL PINION	1	
15	944-109	FEATHER KEY 3X3X8	1	
16	313-050	OIL SEAL (A)	1	
17	600-2DD	BALL BEARING 6002DDUCMPS2S	1	
18	313-058	WASHER	1	
19	313-053	WASHER (A)	1	
20	313-055	GEAR HOLDER	1	
21	313-056	SPRING (C)	4	
22	313-057	NEEDLE PIN D6X6	4	
23	313-054	SECOND GEAR	1	
24	313-059	SPACER	1	
25	629-VVM	BALL BEARING 629VVMC2EPS2L	1	
26	313-051	SLIP CLUTCH ASS'Y	1	INCLUD.14,15,17 - 25
27	313-082	NYLOCK BOLT (W/FLANGE) M5X16	6	
28	991-711	DISTANCE PIECE (B)	5	
29	313-083	CRANK CASE COVER ASS'Y	1	INCLUD.28
30	313-084	RUBBER SEAL	1	
31	313-045	CRANK CASE	1	
32	939-542	RETAINING RING FOR D12 SHAFT (10 PCS.)	1	
33	313-046	CRANK SHAFT	1	
34	940-533	FEATHER KEY 3X3X10	1	
35	620-4VV	BALL BEARING 6204VVMCPS2S	1	
36	313-049	OIL SEAL (B)	1	
37	313-048	BEARING COVER	1	
38	878-181	NYLOCK HEX. SOCKET HD. BOLT M5X16	3	
39	939-299	NEEDLE BEARING (M661)	1	
40	313-047	FIRST GEAR	1	
41	313-139	SEAL PACKING	1	
42	313-088	GEAR COVER	1	
43	971-750	FEATHER KEY 3X3X20	2	
44	313-934	CYLINDER	1	
45	313-121	CLUTCH SPRING	1	
46	981-858	VALVE BAND	1	
47	314-287	STRIKER	1	
48	986-104	O - RING	2	
49	981-956	CLUTCH	1	
50	981-885	PISTON	1	
51	980-708	PISTON PIN	1	

\*: ALTERNATIVE PARTS

## PARTS

DH 40FA

ITEM NO.	CODE NO.	DESCRIPTION	NO. USED	REMARKS	
52	980-707	CONNECTING ROD ASS'Y	1	INCLUD.53	
53	980-756	NEEDLE BEARING (NSK AJ50 1203)	1		
54	993-041	NYLOCK BOLT (W/FLANGE) M8X25	4		
55	313-116	CYLINDER CASE	1		
56	956-996	O - RING (1AS - 60)	1		
57	993-069	NEEDLE BEARING (B) (NTN HMK4520)	1		
58	313-115	BEVEL GEAR	1		
59	313-078	SIDE HANDLE	1		
60	313-079	HANDLE HOLDER	1		
61	313-080	HANDLE BOLT	1		
62	971-786	STOPPER ROD	1		
63	873-095	O - RING (P - 16)	1		
64	313-118	LEVER SHAFT	1		
65	313-120	UNDER COVER	1		
66	313-119	SHAFT COVER	1		
67	880-630	NYLOCK HEX. SOCKET HD. BOLT M4X12	2		
68	959-155	STEEL BALL D3.97 (10 PCS.)	1		
69	981-966	SPRING (B)	1		
70	313-117	LEVER	1		
71	620-2VV	BALL BEARING 6202VVCMP2S	1		
72	980-700	DUST WASHER (B)	1		
73	313-089	O - RING	1		
74	953-174	HEX. HD. TAPPING SCREW D5X55	2		
75	313-086	DUST WASHER (A)	1		
76	629-VVM	BALL BEARING 629VVMC2EPS2L	1		
77	313-141	HOUSING ASS'Y	1	INCLUD.81.83	
78		HITACHI LABEL	1		
79	945-161	BRUSH CAP	2		
80	981-612Z	CARBON BRUSH (AUTO STOP TYPE) (1 PAIR)	2		
81	958-900	BRUSH HOLDER	2		
82	313-077	NYLOCK BOLT (W/FLANGE) M5X25	6		
83	938-477	HEX. SOCKET SET SCREW M5X8	2		
84	313-091	BEARING HOLDER	1		
85	313-090	TAIL COVER	1		
86	302-089	TAPPING SCREW (W/FLANGE) D5X20 (BLACK)	2		
87	971-097	FAN	1		
*	88	360-410C	ARMATURE ASS'Y 110V - 115V	1	INCLUD.87
*	88	360-410E	ARMATURE ASS'Y 220V - 230V	1	INCLUD.87
*	88	360-410F	ARMATURE ASS'Y 240V	1	INCLUD.87
*	89	340-361C	STATOR ASS'Y 110V - 115V	1	INCLUD.90
*	89	340-361G	STATOR ASS'Y 220V - 230V	1	INCLUD.90
*	89	340-361F	STATOR ASS'Y 240V	1	INCLUD.90
*	89	340-361K	STATOR ASS'Y 110V - 115V	1	INCLUD.90 FOR USA,CAN
90	930-703	BRUSH TERMINAL	2		
91	313-095	HANDLE	1		
92	313-093	SWITCH (C) (2P SCREW TYPE W/O LOCK)	1		
93	313-096	HANDLE COVER	1		
94	307-028	TAPPING SCREW (W/FLANGE) D4X25 (BLACK)	2		
*	95	992-810	TERMINAL	1	FOR CORD
*	95	980-063	TERMINAL	1	FOR CORD. FOR SAF,NZL,AUS,GBR (110V)
*	95	930-804	TERMINAL M4.0 (10 PCS.)	1	FOR CORD. FOR USA,CAN

\*: ALTERNATIVE PARTS

**PARTS**

DH 40FA

ITEM NO.	CODE NO.	DESCRIPTION	NO. USED	REMARKS
* 96	960 - 266	CORD CLIP	1	
* 96	981 - 987Z	CORD CLIP	1	FOR SUI
97	984 - 750	TAPPING SCREW (W/FLANGE) D4X16	2	
* 98	500 - 390Z	CORD	1	(CORD ARMOR D10.7)
* 98	500 - 446Z	CORD	1	(CORD ARMOR D10.7) FOR GBR (110V)
* 98	500 - 446Z	CORD	1	(CORD ARMOR D10.7) FOR GBR (230V)
* 98	500 - 231Z	CORD	1	(CORD ARMOR D8.2) FOR SAF
* 98	500 - 227Z	CORD	1	(CORD ARMOR D8.2) FOR NZL
* 98	500 - 439Z	CORD	1	(CORD ARMOR D10.7) FOR AUS
* 98	311 - 953	CORD	1	(CORD ARMOR D10.7) FOR USA,CAN
* 98	500 - 391Z	CORD	1	(CORD ARMOR D10.7) FOR SUI
99	305 - 558	TAPPING SCREW (W/FLANGE) D5X25 (BLACK)	4	
* 100		NAME PLATE	1	
* 101	940 - 778	CORD ARMOR D10.7	1	
* 101	958 - 049	CORD ARMOR D8.2	1	
* 102	313 - 142	PLUG (A)	1	
* 102	313 - 092	PLUG (A)	1	FOR AUS,USA,CAN
* 102	313 - 144	PLUG (A)	1	FOR SUI
* 103	313 - 143	PLUG (B)	1	
* 103	313 - 094	PLUG (B)	1	FOR AUS,SAF
* 103	313 - 966	PLUG (B)	1	FOR USA,CAN
* 104	959 - 141	CONNECTOR 50092 (10 PCS.)	1	FOR AUS,SAF
* 105	938 - 307	PILLAR TERMINAL	1	EXCEPT FOR AUS,SAF

**STANDARD ACCESSORIES**

ITEM NO.	CODE NO.	DESCRIPTION	NO. USED	REMARKS
501	313 - 097	CASE (PLASTIC)	1	
502	981 - 840	GREASE (A) FOR HAMMER.HAMMER DRILL (30G)	1	
503	944 - 458	HEX. BAR WRENCH 4MM	1	
504	944 - 459	HEX. BAR WRENCH 5MM	1	
505	993 - 245	DUST COVER	1	

**OPTIONAL ACCESSORIES**

ITEM NO.	CODE NO.	DESCRIPTION	NO. USED	REMARKS
601	985 - 374	DRILL BIT D13X400L (D1/2"X16")	1	
602	985 - 375	DRILL BIT D25X400L (D1"X16")	1	
603	985 - 376	DRILL BIT D38X400L (D1 - 1/2"X16")	1	
604	985 - 377	A - TAPER SHANK ADAPTER	1	
605	985 - 378	B - TAPER SHANK ADAPTER	1	
606	944 - 477	COTTER	1	
607	985 - 380	CORE BIT 50MM	1	INCLUD.608
608	985 - 388	GUIDE PLATE (FOR CORE BIT 50MM)	1	
609	955 - 159	CORE BIT 105MM	1	INCLUD.610
610	955 - 169	GUIDE PLATE (FOR CORE BIT 105MM)	1	
611	955 - 165	CENTER PIN (A) 133L FOR CORE BIT D38 - 150	1	
612	984 - 029	CORE BIT SHANK D35 (1 - 3/8") OR BELOW	1	

\* : ALTERNATIVE PARTS

