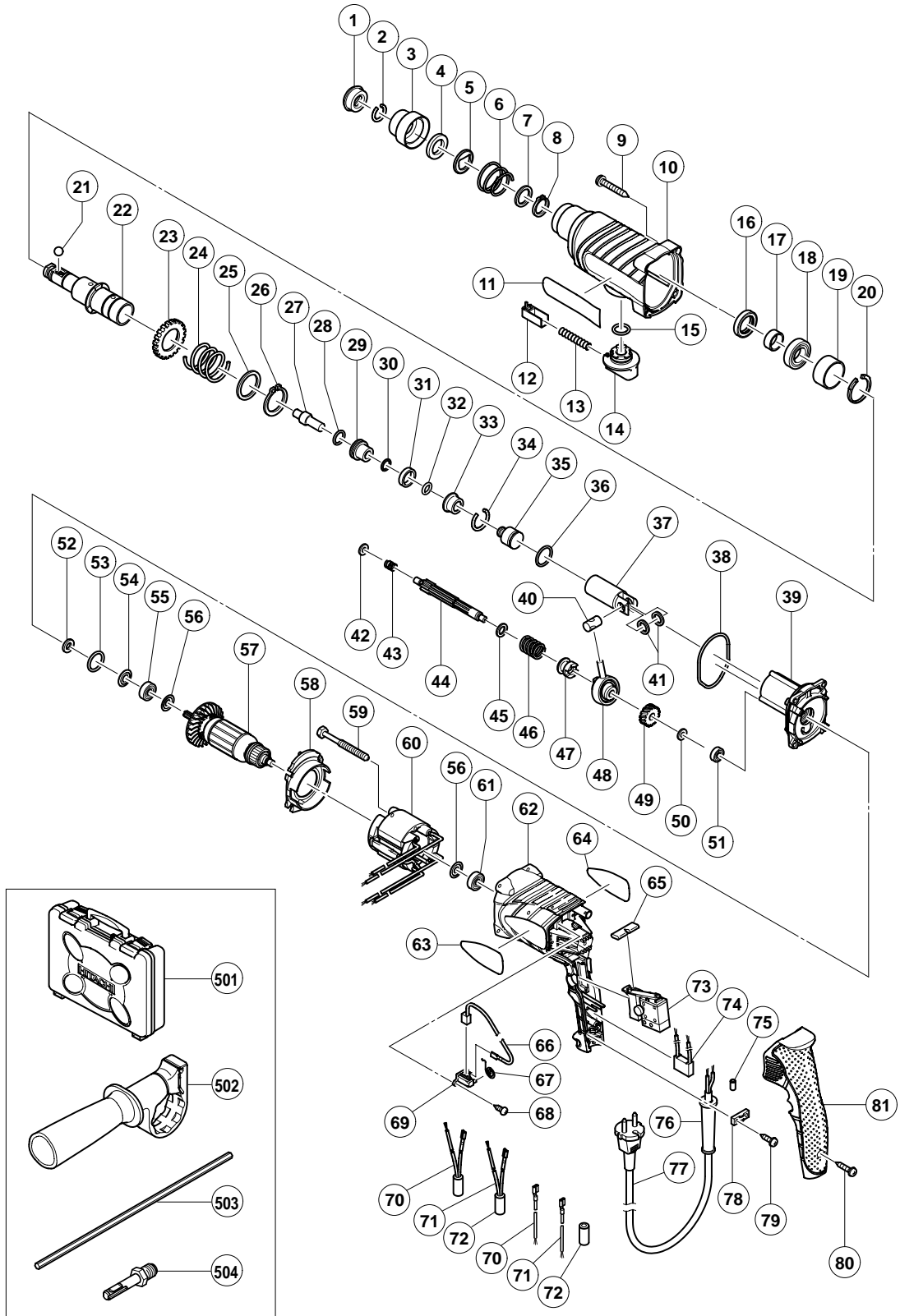


ELECTRIC TOOL PARTS LIST

■ ROTARY HAMMER
Model DH 24PB2

2004 • 4 • 5
(E1)



PARTS

DH 24PB2

ITEM NO.	CODE NO.	DESCRIPTION	NO. USED	REMARKS
1	306-345	FRONT CAP	1	
2	306-340	STOPPER RING	1	
3	322-809	GRIP	1	
4	322-810	BALL HOLDER	1	
5	322-811	HOLDER PLATE	1	
6	322-812	HOLDER SPRING	1	
7	984-118	WASHER (B)	1	
8	939-547	RETAINING RING FOR D20 SHAFT (10 PCS.)	1	
9	301-654	TAPPING SCREW (W/FLANGE) D5X35	4	
10	322-786	GEAR COVER	1	
11		HITACHI LABEL	1	
12	322-789	PUSHING BUTTON	1	
13	317-223	PUSHING SPRING	1	
14	322-787	CHANGE LEVER	1	
15	878-885	O-RING (S-18)	1	
16	307-688	OIL SEAL	1	
17	322-815	SLEEVE	1	
18	690-4DD	BALL BEARING 6904DDPS2L	1	
19	322-819	SLEEVE (A)	1	
20	322-813	RETAINING RING 37MM	1	
21	959-156	STEEL BALL D7.0 (10 PCS.)	1	
22	322-814	CYLINDER	1	
23	301-677	SECOND GEAR	1	
24	301-678	SPRING (A)	1	
25	301-679	WASHER (A)	1	
26	948-310	RETAINING RING FOR D30 SHAFT	1	
27	322-803	SECOND HAMMER	1	
28	944-486	O-RING (1AP-20)	1	
29	322-804	HAMMER HOLDER	1	
30	322-802	O-RING (B)	1	
31	322-805	DAMPER (A)	1	
32	322-808	O-RING (C)	1	
33	322-806	DAMPER HOLDER	1	
34	322-807	STOPPER RING	1	
35	322-801	STRIKER	1	
36	322-834	O-RING	1	
37	322-800	PISTON	1	
38	322-793	O-RING	1	
39	322-792	INNER COVER	1	
40	322-798	PISTON PIN	1	
41	322-799	WASHER (C)	2	
42	322-795	SPACER	1	
43	322-796	SPRING (B)	1	
44	322-794	SECOND SHAFT	1	
45	301-659	WASHER (B)	1	
46	301-660	CLUTCH SPRING	1	
47	301-661	CLUTCH	1	
48	306-990	RECIPROCATING BEARING	1	
49	322-797	FIRST GEAR	1	
50	301-663	SPACER	1	
51	626-VVM	BALL BEARING 626VVC2PS2L	1	

PARTS

DH 24PB2

ITEM NO.	CODE NO.	DESCRIPTION	NO. USED	REMARKS
52	322-816	FELT PACKING	1	
53	876-796	O-RING (P-22)	1	
54	322-818	PACKING WASHER	1	
55	608-DDM	BALL BEARING 608DDC2PS2L	1	
56	982-631	WASHER (A)	2	
* 57	360-648U	ARMATURE ASS'Y 110V-120V	1	INCLUD. 55, 56, 61
* 57	360-648E	ARMATURE 220V-230V	1	
* 57	360-648F	ARMATURE 240V	1	
58	322-791	FAN GUIDE	1	
59	981-421	HEX. HD. TAPPING SCREW D4X55	2	
* 60	340-581C	STATOR 110V-120V	1	
* 60	340-581E	STATOR 220V-230V	1	
* 60	340-581F	STATOR 240V	1	
61	608-VVM	BALL BEARING 608VVC2PS2L	1	
62	322-832	HOUSING	1	
63		HITACHI LABEL	1	
64		NAME PLATE	1	
65	322-790	PUSHING BUTTON	1	
66	999-088	CARBON BRUSH (1 PAIR)	2	
67	308-536	SPRING	2	
68	306-945	TAPPING SCREW D3X10	4	
69	322-838	BRUSH HOLDER	2	
* 70	322-826	INTERNAL WIRE (BROWN)	1	FOR THA, SYR, INA, KUW, IND, HKG, SIN
* 70	322-821	INTERNAL WIRE (BROWN)	1	FOR VEN, USA, CAN
* 70	322-827	CHOKE COIL (BROWN)	1	FOR FIN, NOR, SWE, DEN, ESP, GBR (230V), SUI, NZL, POL, HUN, AUS, SAF, KOR
* 70	322-828	CHOKE COIL (BROWN)	1	FOR GBR (110V), TPE
* 71	322-829	INTERNAL WIRE (BLUE)	1	FOR THA, SYR, INA, KUW, IND, HKG, SIN
* 71	322-822	INTERNAL WIRE (BLUE)	1	FOR VEN, USA, CAN
* 71	322-830	CHOKE COIL (BLUE)	1	FOR FIN, NOR, SWE, DEN, ESP, GBR (230V), SUI, NZL, POL, HUN, AUS, SAF, KOR
* 71	322-831	CHOKE COIL (BLUE)	1	FOR GBR (110V), TPE
72	322-823	SUPPORT (B)	2	
* 73	322-825	SWITCH (B)	1	
* 73	322-820	SWITCH (A)	1	FOR VEN, TPE, GBR (110V), USA, CAN
74	994-273	NOISE SUPPRESSOR	1	
75	981-373	TUBE (D)	2	FOR CORD
* 76	953-327	CORD ARMOR D8.8	1	
* 76	938-051	CORD ARMOR D10.1	1	
* 77	500-390Z	CORD	1	(CORD ARMOR D8.8)
* 77	500-239Z	CORD	1	(CORD ARMOR D10.1) FOR THA
* 77	500-245Z	CORD	1	(CORD ARMOR D10.1) FOR SYR
* 77	500-424Z	CORD	1	(CORD ARMOR D8.8) FOR SIN, KUW
* 77	500-394Z	CORD	1	(CORD ARMOR D10.1) FOR VEN
* 77	500-408Z	CORD	1	(CORD ARMOR D8.8) FOR NZL, AUS
* 77	500-235Z	CORD	1	(CORD ARMOR D8.8) FOR INA, IND, KOR
* 77	500-249Z	CORD	1	(CORD ARMOR D8.8) FOR USA,CAN
* 77	500-446Z	CORD	1	(CORD ARMOR D8.8) FOR GBR (230V)
* 77	500-454Z	CORD	1	(CORD ARMOR D8.8) FOR GBR (110V)
* 77	500-391Z	CORD	1	(CORD ARMOR D8.8) FOR SUI
* 77	500-440Z	CORD	1	(CORD ARMOR D8.8) FOR HKG

STANDARD ACCESSORIES

DH 24PB2

ITEM NO.	CODE NO.	DESCRIPTION	NO. USED	REMARKS
501	322-706	CASE	1	
502	303-659	SIDE HANDLE	1	
* 503	303-709	DEPTH GAUGE	1	
* 503	310-331	DEPTH GAUGE	1	FOR USA, CAN
* 504	303-624	CHUCK ADAPTER (D) (SDS PLUS)	1	FOR AUS

OPTIONAL ACCESSORIES

ITEM NO.	CODE NO.	DESCRIPTION	NO. USED	REMARKS
601	980-927	GREASE FOR HAMMER. HAMMER DRILL (500G)	1	
602	981-840	GREASE (A) FOR HAMMER. HAMMER DRILL (30G)	1	
603	308-471	GREASE FOR HAMMER. HAMMER DRILL (70G)	1	
604	306-885	DUST COLLECTOR (B) ASS'Y	1	INCLUD. 605
605	306-910	SOCKET ADAPTER (B)	1	
606	971-787	DUST CUP	1	
607	931-844	STOPPER	1	
608	321-814	DRILL CHUCK 13VLRB-D	1	INCLUD. 609
609	995-344	FLAT HD. SCREW (A) (LEFT HAND) M6X25	1	
610	321-813	DRILL CHUCK 13VLD-D	1	
611	971-511Z	+ DRIVER BIT (A) NO.2 25L	1	
612	971-512Z	+ DRIVER BIT (A) NO.3 25L	1	
613	944-477	COTTER	1	
614	982-684	CENTER PIN (A) 109L FOR CORE BIT D32-38	1	
615	982-685	CENTER PIN (B) 104L FOR CORE BIT D45-90	1	
616	982-672	CORE BIT (A) 25MM	1	
617	982-673	CORE BIT (A) 29MM	1	
618	982-674	CORE BIT (A) 32MM	1	INCLUD. 619
619	982-686	GUIDE PLATE (FOR CORE BIT 32MM)	1	
620	982-675	CORE BIT (A) 35MM	1	INCLUD. 621
621	982-687	GUIDE PLATE (FOR CORE BIT 35MM)	1	
622	982-676	CORE BIT (A) 38MM	1	INCLUD. 623
623	982-688	GUIDE PLATE (FOR CORE BIT 38MM)	1	
624	982-677	CORE BIT (B) 45MM	1	INCLUD. 625
625	982-689	GUIDE PLATE (FOR CORE BIT 45MM)	1	
626	982-678	CORE BIT (B) 50MM	1	INCLUD. 627
627	982-690	GUIDE PLATE (FOR CORE BIT 50MM)	1	
628	971-794	ANCHOR SETTING ADAPTER A W1/4" (MANUAL)	1	
629	971-795	ANCHOR SETTING ADAPTER A W5/16" (MANUAL)	1	
630	971-796	ANCHOR SETTING ADAPTER A W3/8" (MANUAL)	1	
631	971-797	ANCHOR SETTING ADAPTER A W1/2" (MANUAL)	1	

